

BENZIE COUNTY ROAD COMMISSION  
HONOR MICHIGAN

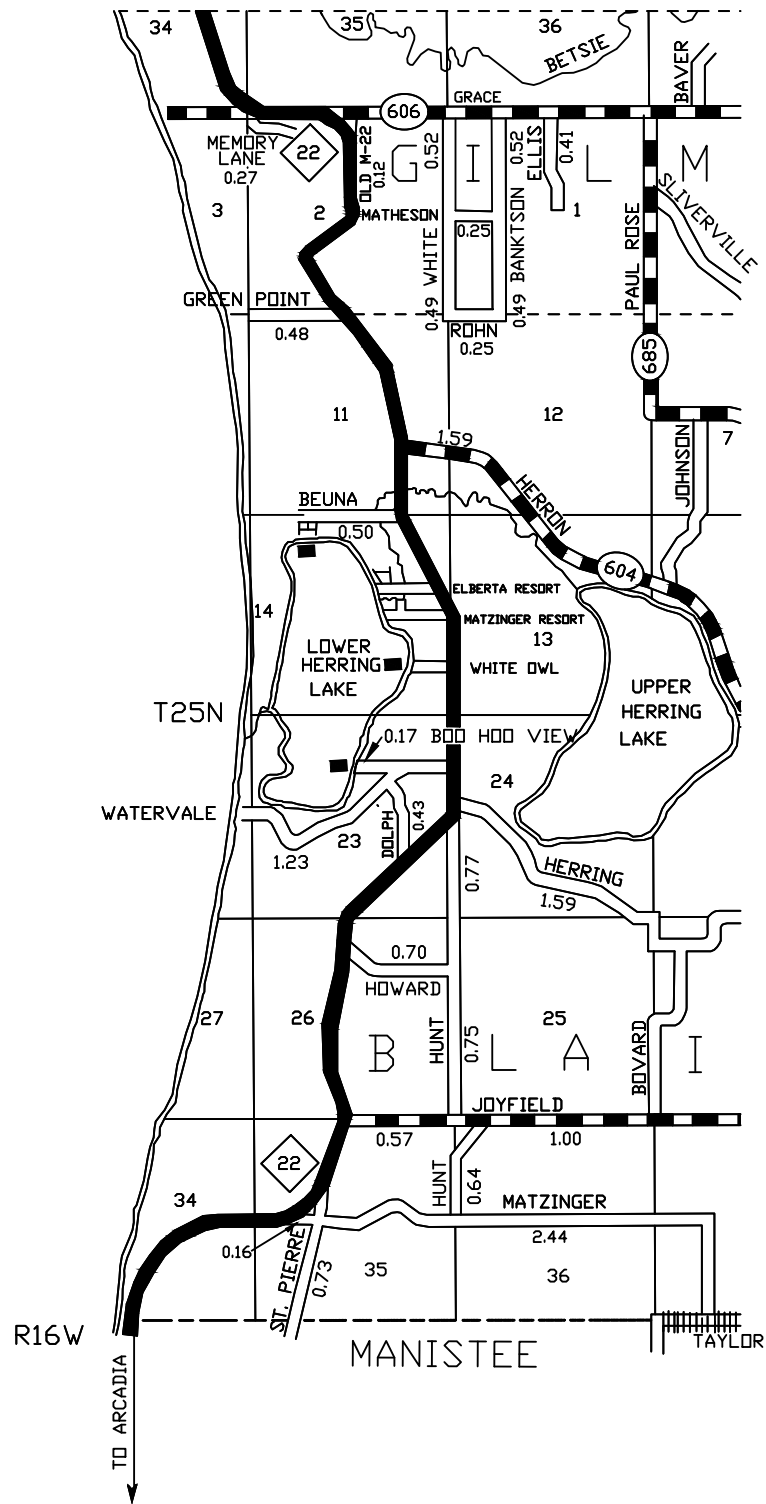
CERTIFICATION AS OF DEC. 31, 2023

TOWNSHIP	SHEET NUMBERS	TOWNSHIP	SHEET NUMBERS
ALMIRA	12 12.11 12.24 12.26 12.34 12.35	HOMESTEAD	7 7.9 7.20
BENZONIA	2 6 6.2 6.3 6.9 6.23 6.24 6.26 7	INLAND	8 8.23
BLAINE	1 1.14 2	JOYFIELD	2
COLFAX	4 4.34	LAKE	5 6 6.8 9 10 10.33 10.36
CRYSTAL LAKE	5 5.9 6 6.20	PLATTE	11
GILMORE	1 2 5 6	WELDON	3

"I CERTIFY THAT ALL OF THE ROADS ON WHICH LENGTHS HAVE BEEN ENTERED ALONG THE ROAD BANDS OF THE ATTACHED TOWNSHIP AND ENLARGED SECTIONS MAPS ARE NORMALLY OPEN TO AUTOMOBILE TRAFFIC DURING THE MONTHS OF MAY THROUGH OCTOBER AND ARE UNDER THE JURISDICTION OF THE BENZIE COUNTY ROAD COMMISSION."

\_\_\_\_\_  
CHAIRMAN

\_\_\_\_\_  
DATE



LEGEND

- COUNTY LINE
- CORPORATE LIMITS
- STATE TRUNKLINE
- COUNTY PRIMARY
- COUNTY LOCAL
- ADJACENT COUNTY
- CITY OR VILLAGE STREET

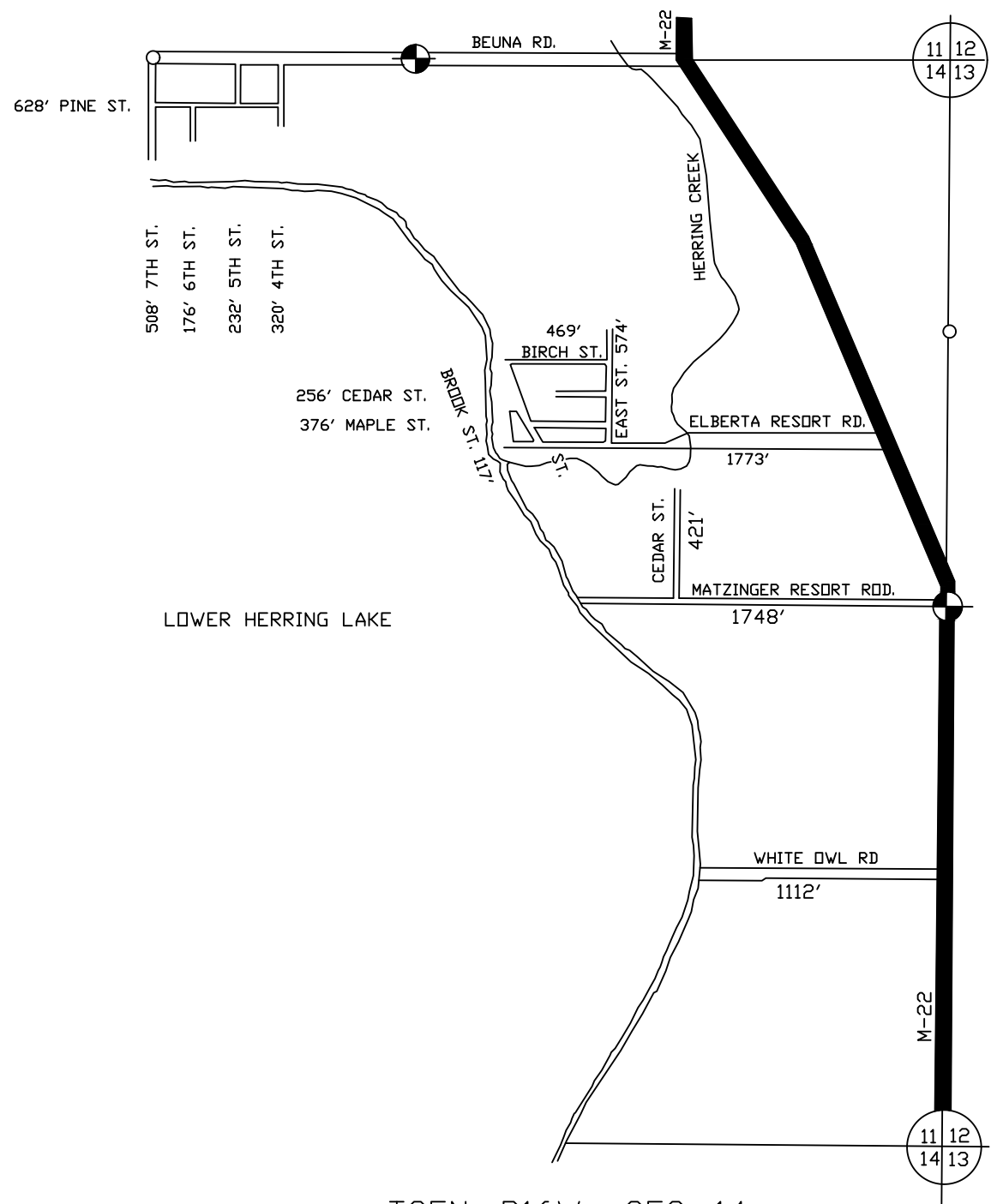
  

POLITICAL TOWNSHIP	PRIMARY	LOCAL
BLAINE	3.16	10.11
GILMORE		3.80
TOTAL	3.16	13.91



BENZIE CO. - 10 T25N, R16W

PREPARED BY  
 BENZIE COUNTY ROAD COMMISSION

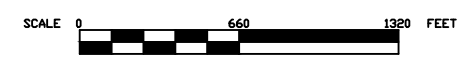


- LEGEND
- COUNTY LINE
  - CORDRATE LIMITS
  - STATE TRUNK,INE
  - COUNTY PRIMARY
  - COUNTY LOCAL
  - ADJACENT COUNTY
  - CITY OR VILLAGE STREET

TOTAL FEET 8710 EQUALS 1.65 MILES

I HEREBY CERIFY THAT THE ROADS SHOWN HEREON BY SYMBOL OR IN GREEN AS LOCAL ROADS ARE IN USE AND ARE UNDER THE JURISDICTION OF THE COUNTY ROAD COMMISSION.

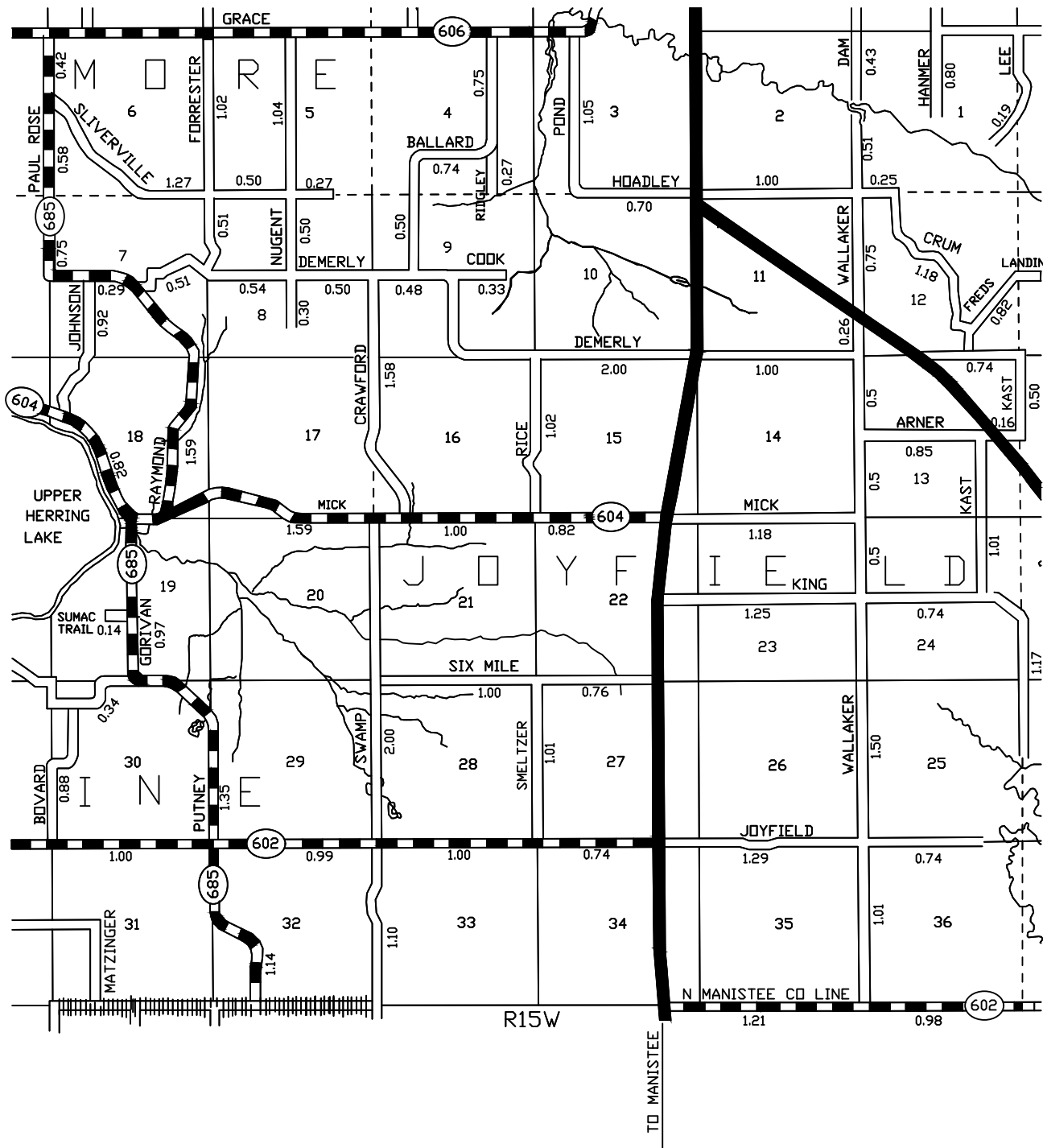
\_\_\_\_\_  
CHAIRMAN                      DATE



TOWNSHIP BLAINE  
SECTION 14 T25N, R16W  
COUNTY BENZIE

PREPARED BY  
BENZIE COUNTY ROAD COMMISSION

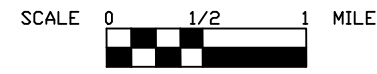
T25N, R16W SEC. 14



LEGEND

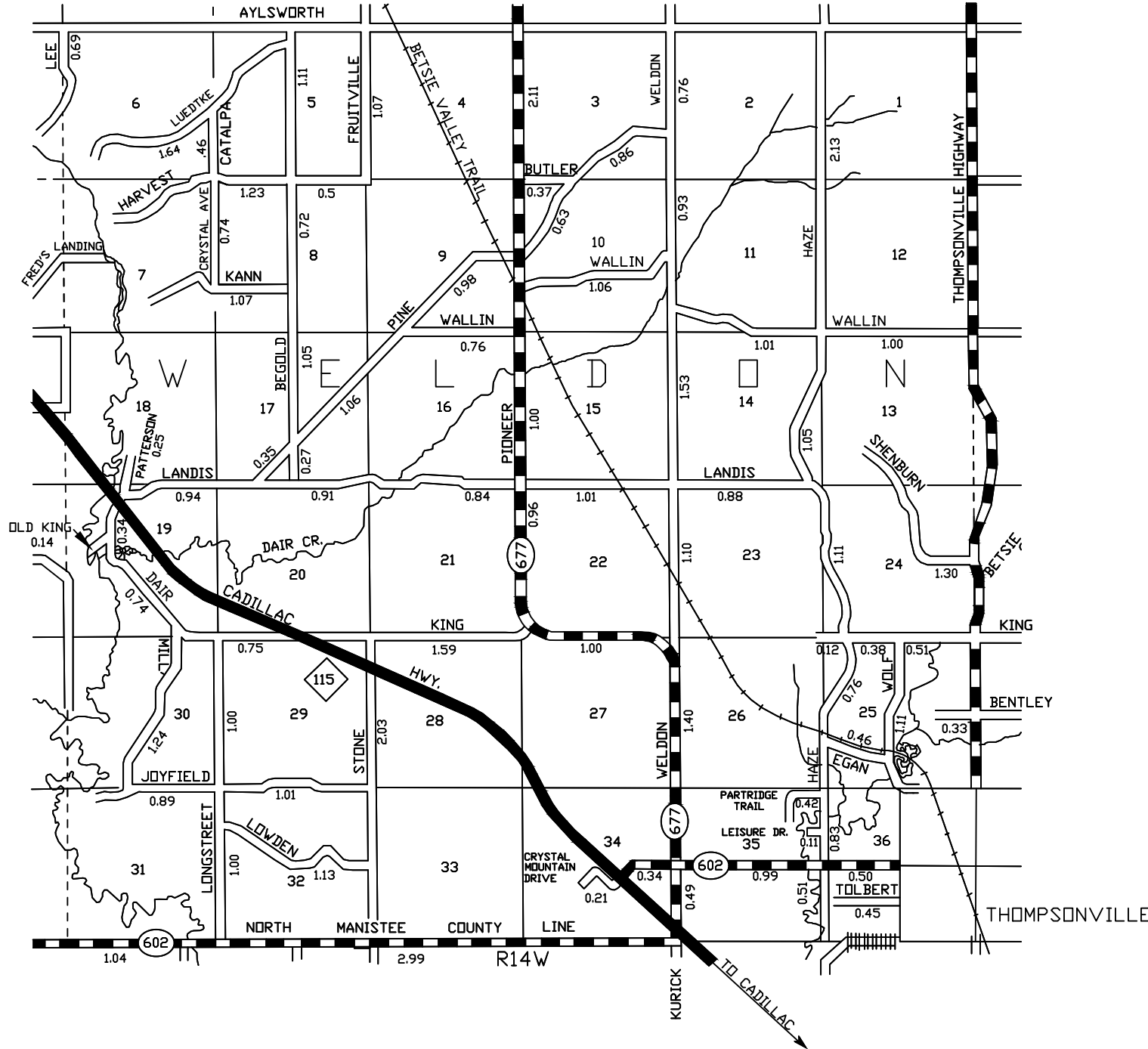
- COUNTY LINE
- CORPORATE LIMITS
- STATE TRUNK LINE
- COUNTY PRIMARY
- COUNTY LOCAL
- ADJACENT COUNTY
- CITY OR VILLAGE STREET

POLITICAL TOWNSHIP	PRIMARY	LOCAL
BENZONIA		6.69
BLAINE	10.49	8.24
GILMORE	1.00	4.10
JOYFIELD	5.75	26.33
TOTAL	17.24	45.36



BENZIE CO. - 10 T25N, R15W

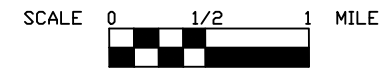
PREPARED BY  
BENZIE COUNTY ROAD COMMISSION



LEGEND

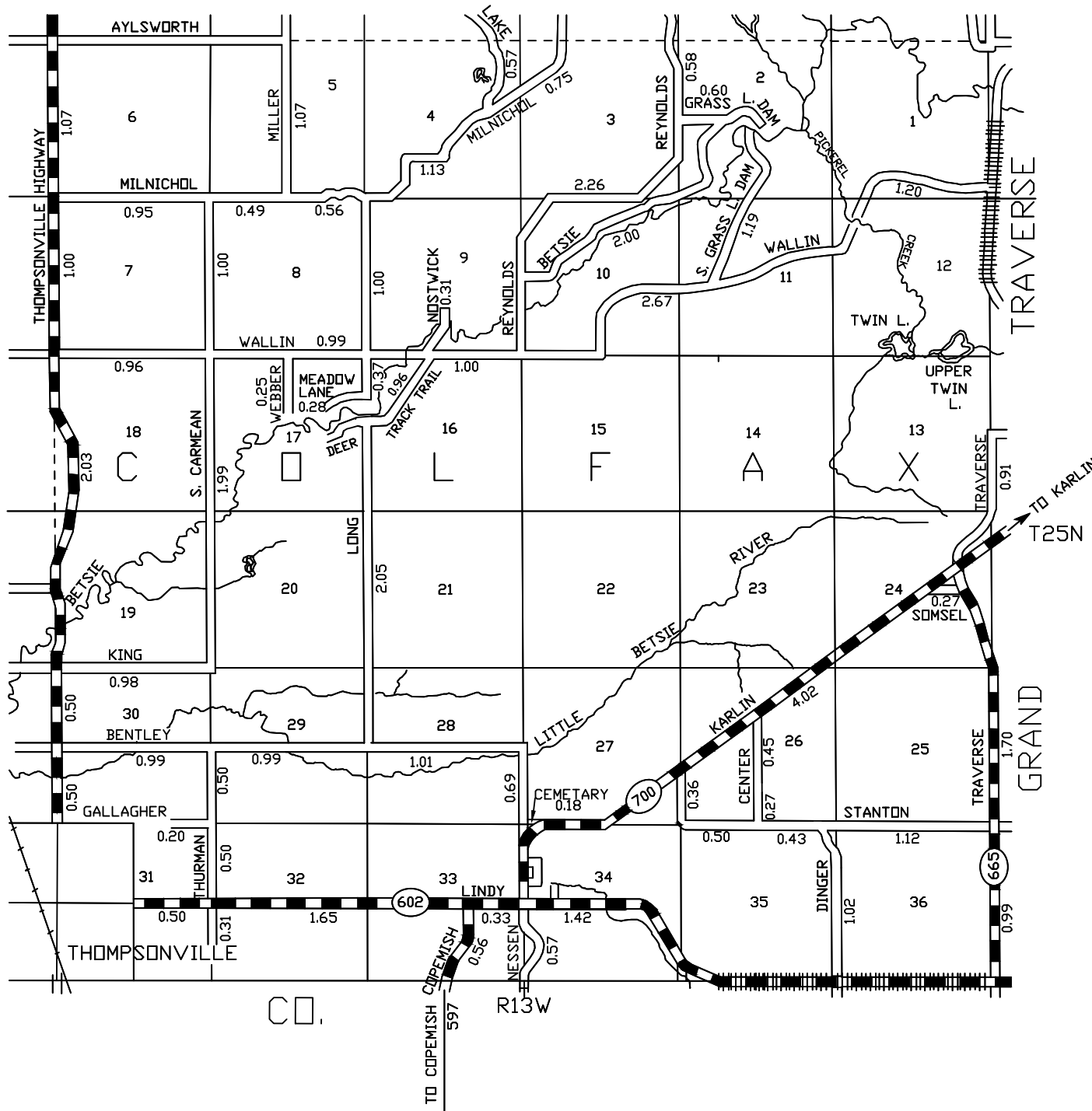
- COUNTY LINE
- CORDRATE LIMITS
- STATE TRUNK LINE
- COUNTY PRIMARY
- COUNTY LOCAL
- ADJACENT COUNTY
- CITY OR VILLAGE STREET

POLITICAL TOWNSHIP	PRIMARY	LOCAL
WELDON	12.82	51.43



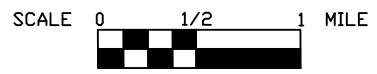
BENZIE CO. - 10 T25N, R14W

PREPARED BY  
 BENZIE COUNTY ROAD COMMISSION



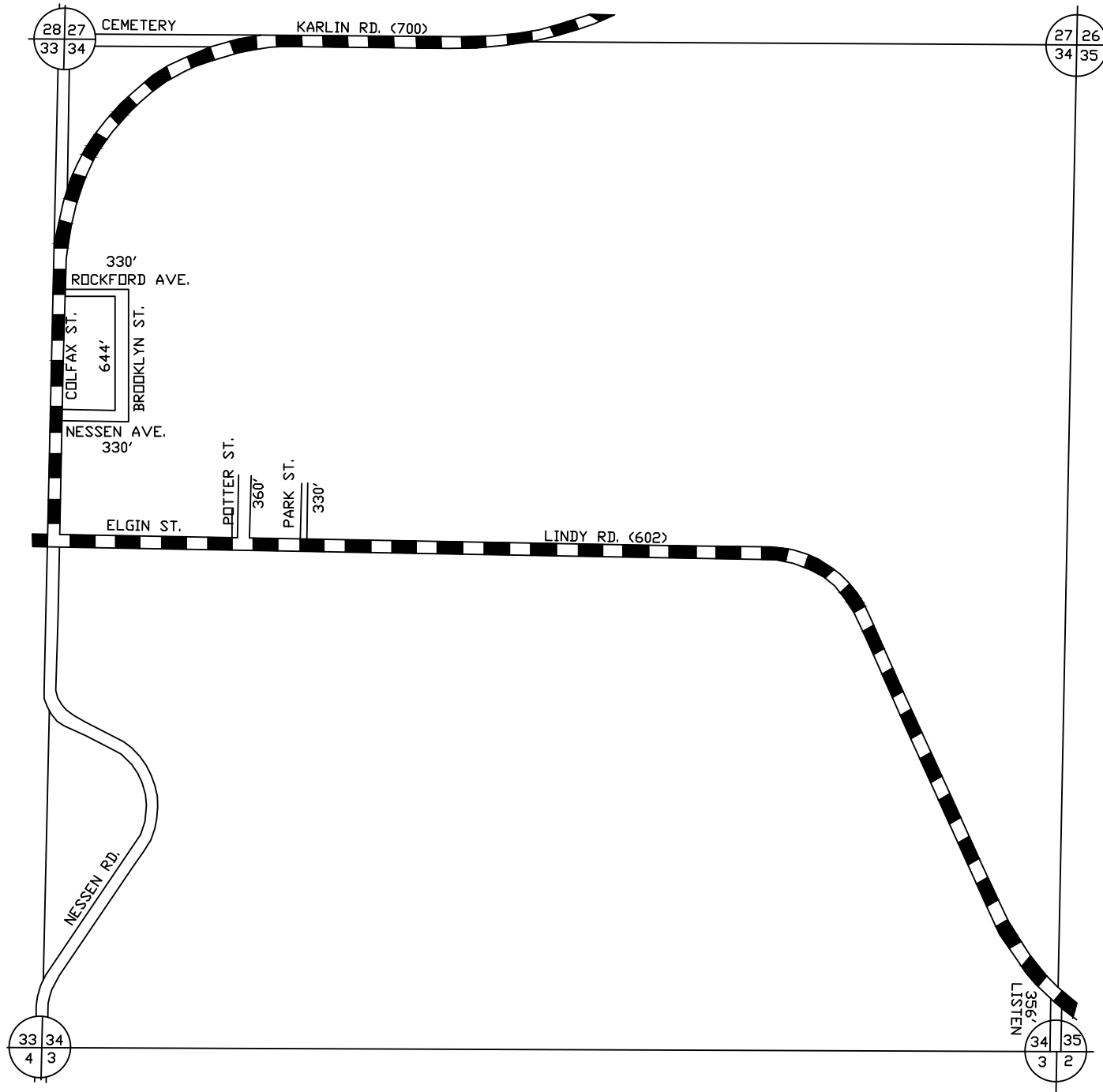
LEGEND

COUNTY LINE	----
CORPORATE LIMITS	----
STATE TRUNKLINE	=====
COUNTY PRIMARY	=====
COUNTY LOCAL	=====
ADJACENT COUNTY	
CITY OR VILLAGE STREET	----
POLITICAL TOWNSHIP	
COLFAX	PRIMARY LOCAL
	16.27 39.43



BENZIE CO. - 10 T25N, R13W

PREPARED BY  
 BENZIE COUNTY ROAD COMMISSION



LEGEND

COUNTY LINE	----
CORPORATE LIMITS	- - - -
STATE TRUNK LINE	=====
COUNTY PRIMARY	====+====
COUNTY LOCAL	=====
ADJACENT COUNTY	
CITY OR VILLAGE STREET	=====

TOTAL FEET 2350 EQUALS 0.45 MILES

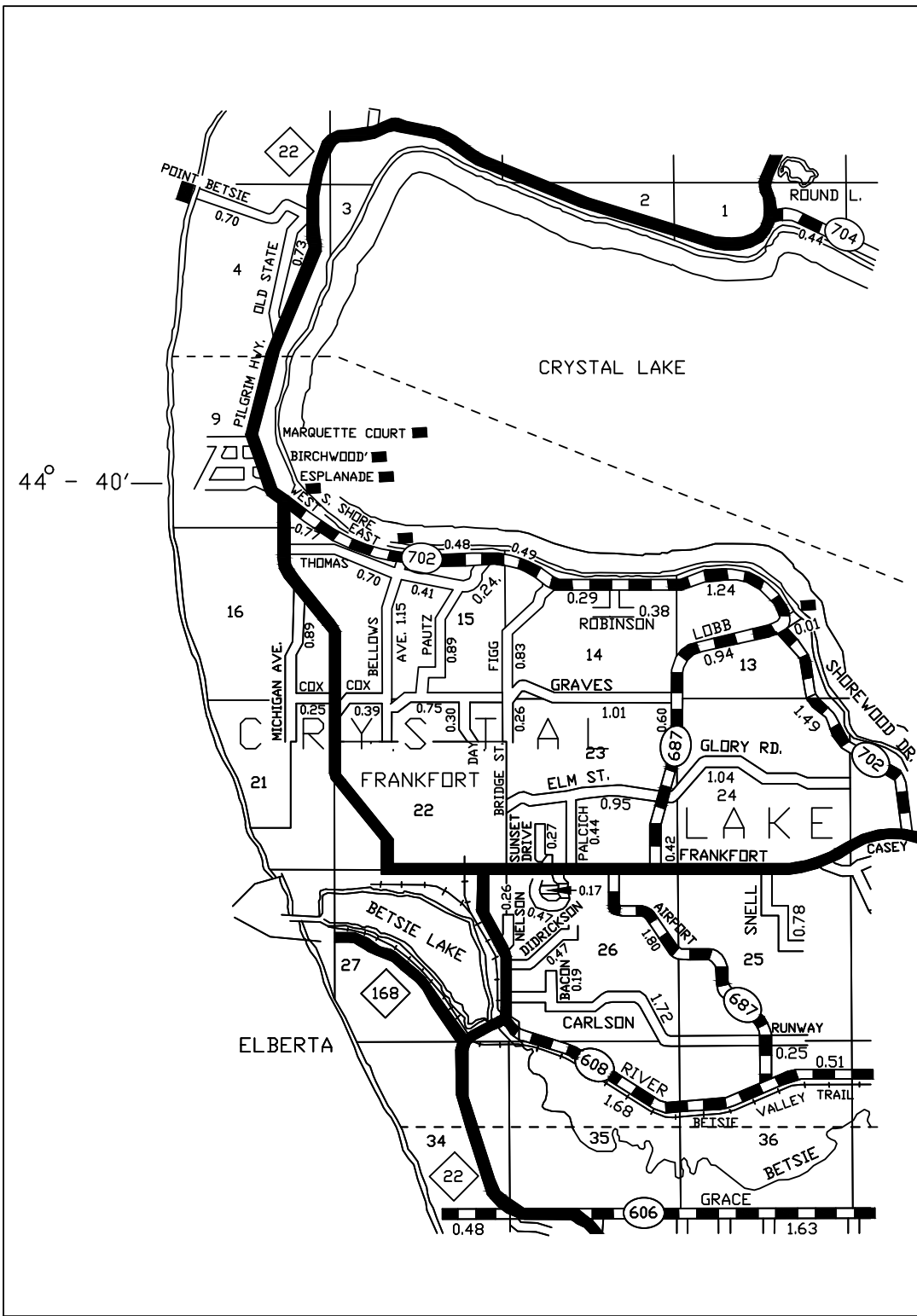
I HEREBY CERTIFY THAT THE ROADS SHOWN HEREON BY SYMBOL OR IN GREEN AS LOCAL ROADS ARE IN USE AND ARE UNDER THE JURISDICTION OF THE COUNTY ROAD COMMISSION.

\_\_\_\_\_  
CHAIRMAN                      DATE



TOWNSHIP COLFAX  
SECTION 34 T25N, R13W  
COUNTY BENZIE

PREPARED BY  
BENZIE COUNTY ROAD COMMISSION



44° - 40'

LEGEND

- COUNTY LINE -----
- CORPORATE LIMITS - - - - -
- STATE TRUNKLINE **—————**
- COUNTY PRIMARY **▬▬▬▬▬▬**
- COUNTY LOCAL **=====**
- ADJACENT COUNTY **|||||**
- CITY OR VILLAGE STREET **—————**

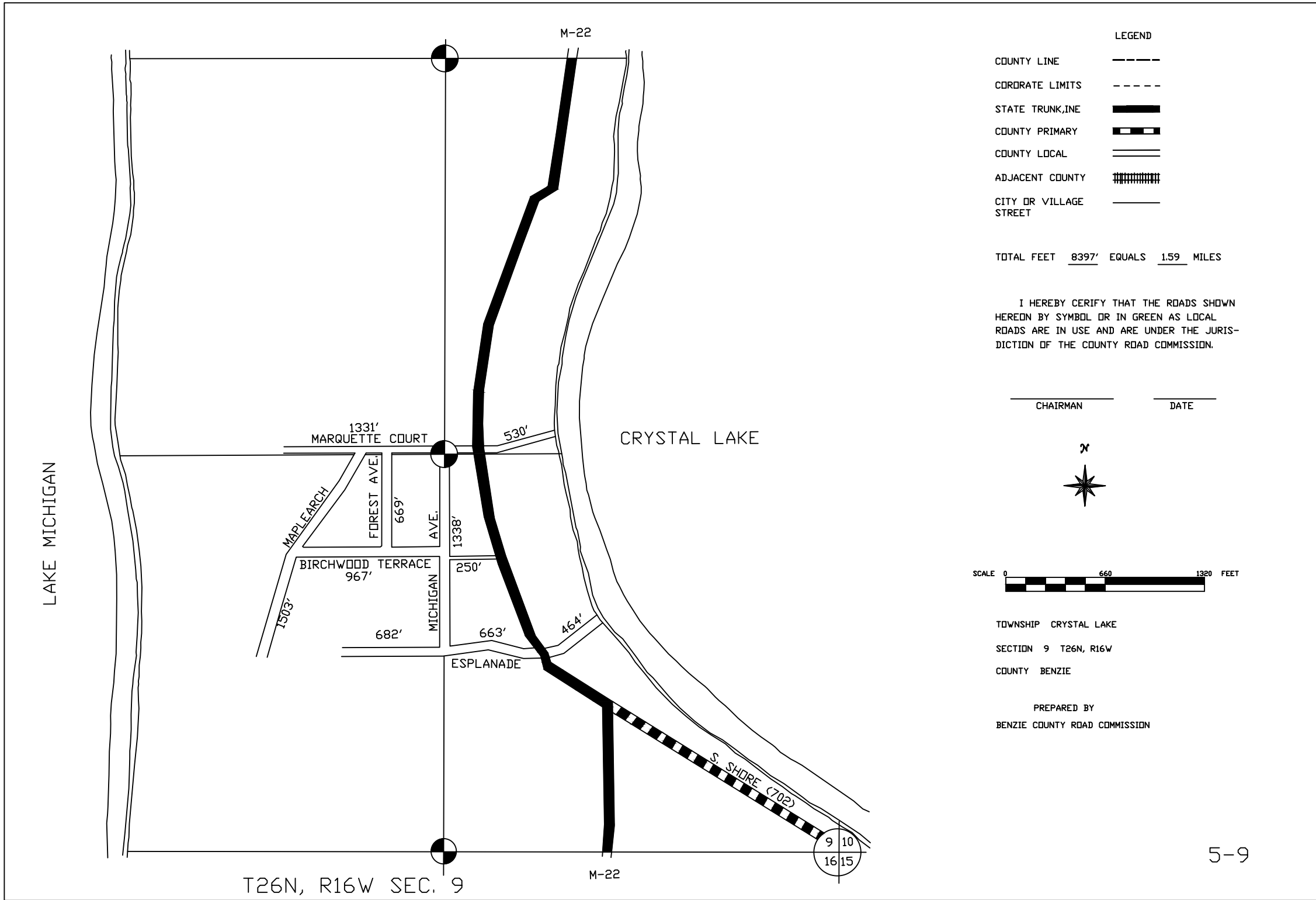
POLITICAL TOWNSHIP	PRIMARY	LOCAL
CRYSTAL LAKE TWP.	10.67	15.18
GILMORE	2.11	0
LAKE TWP.	0.44	1.43
CITY OF FRANKFORT	0.04	0.28
VILLAGE OF ELBERTA	0	0
<b>TOTAL</b>	<b>13.26</b>	<b>16.89</b>



BENZIE CO. - 10 T26N, R16W

PREPARED BY  
 BENZIE COUNTY ROAD COMMISSION





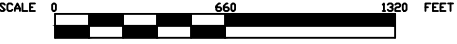
LEGEND

- COUNTY LINE
- COORDINATE LIMITS
- STATE TRUNKLINE
- COUNTY PRIMARY
- COUNTY LOCAL
- ADJACENT COUNTY
- CITY OR VILLAGE STREET

TOTAL FEET 8397' EQUALS 1.59 MILES

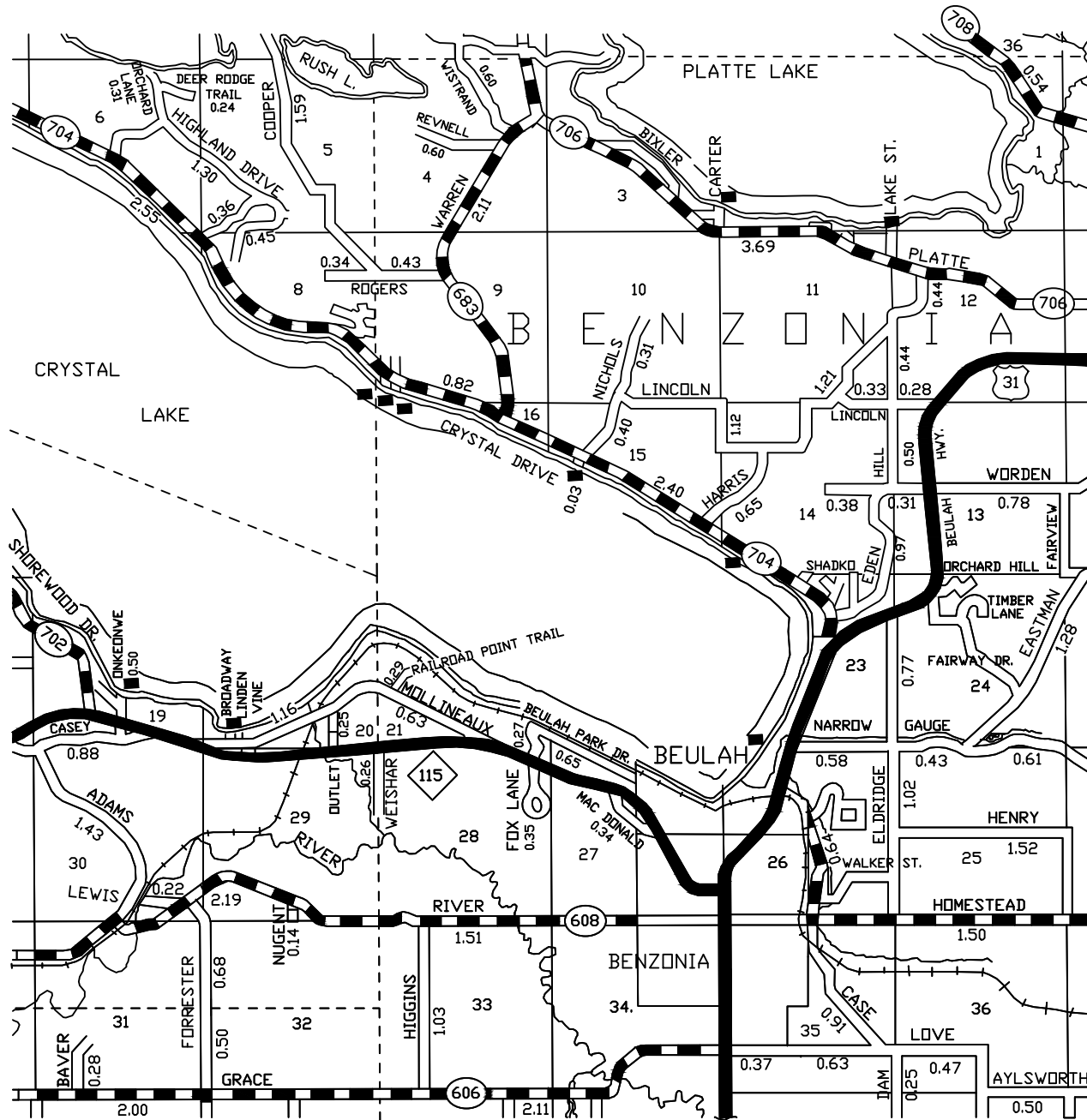
I HEREBY CERTIFY THAT THE ROADS SHOWN HEREON BY SYMBOL OR IN GREEN AS LOCAL ROADS ARE IN USE AND ARE UNDER THE JURISDICTION OF THE COUNTY ROAD COMMISSION.

\_\_\_\_\_  
CHAIRMAN                      DATE



TOWNSHIP CRYSTAL LAKE  
SECTION 9 T26N, R16W  
COUNTY BENZIE

PREPARED BY  
BENZIE COUNTY ROAD COMMISSION



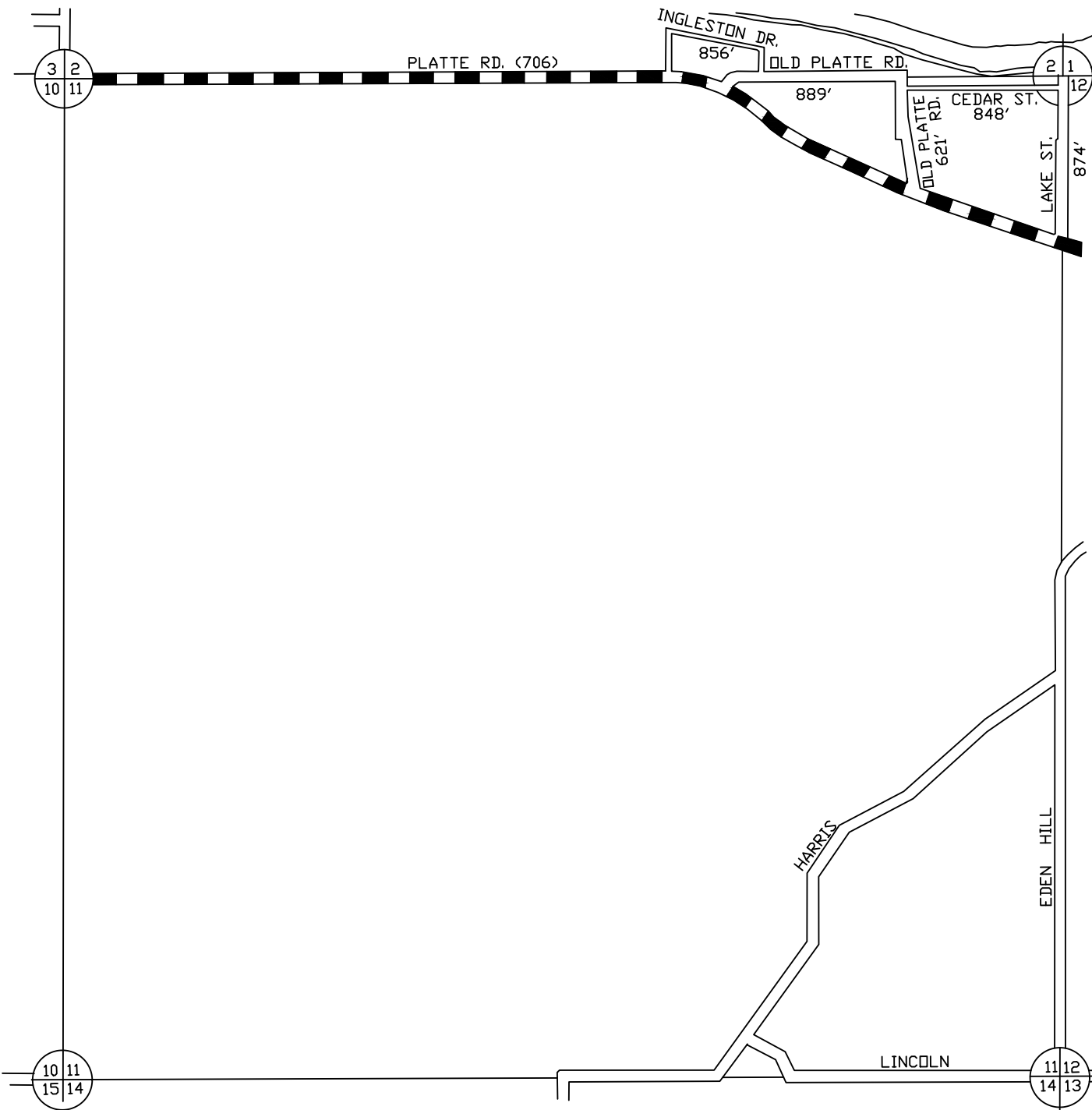
- LEGEND
- COUNTY LINE -----
  - CORDRATE LIMITS - - - - -
  - STATE TRUNK,INE **█**
  - COUNTY PRIMARY **▨**
  - COUNTY LOCAL **▬▬▬**
  - ADJACENT COUNTY **|||||**
  - CITY OR VILLAGE STREET **—**

POLITICAL TOWNSHIP	PRIMARY	LOCAL
BENZONIA TWP.	15.32	22.91
CRYSTAL LAKE TWP.	2.19	5.26
GILMORE TWP.	2.00	0.78
LAKE TWP.	2.55	4.59
VILLAGE OF BENZONIA	0	0
VILLAGE OF BEULAH	0	0
TOTAL	22.06	33.54



BENZIE CO. - 10 T26N, R15W

PREPARED BY  
BENZIE COUNTY ROAD COMMISSION

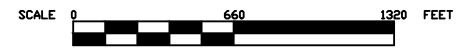


- LEGEND
- COUNTY LINE
  - CORPORATE LIMITS
  - STATE TRUNK LINE
  - COUNTY PRIMARY
  - COUNTY LOCAL
  - ADJACENT COUNTY
  - CITY OR VILLAGE STREET

TOTAL FEET 4088' EQUALS 0.77 MILES

I HEREBY CERIFY THAT THE ROADS SHOWN  
HEREON BY SYMBOL OR IN GREEN AS LOCAL  
ROADS ARE IN USE AND ARE UNDER THE JURIS-  
DICTION OF THE COUNTY ROAD COMMISSION.

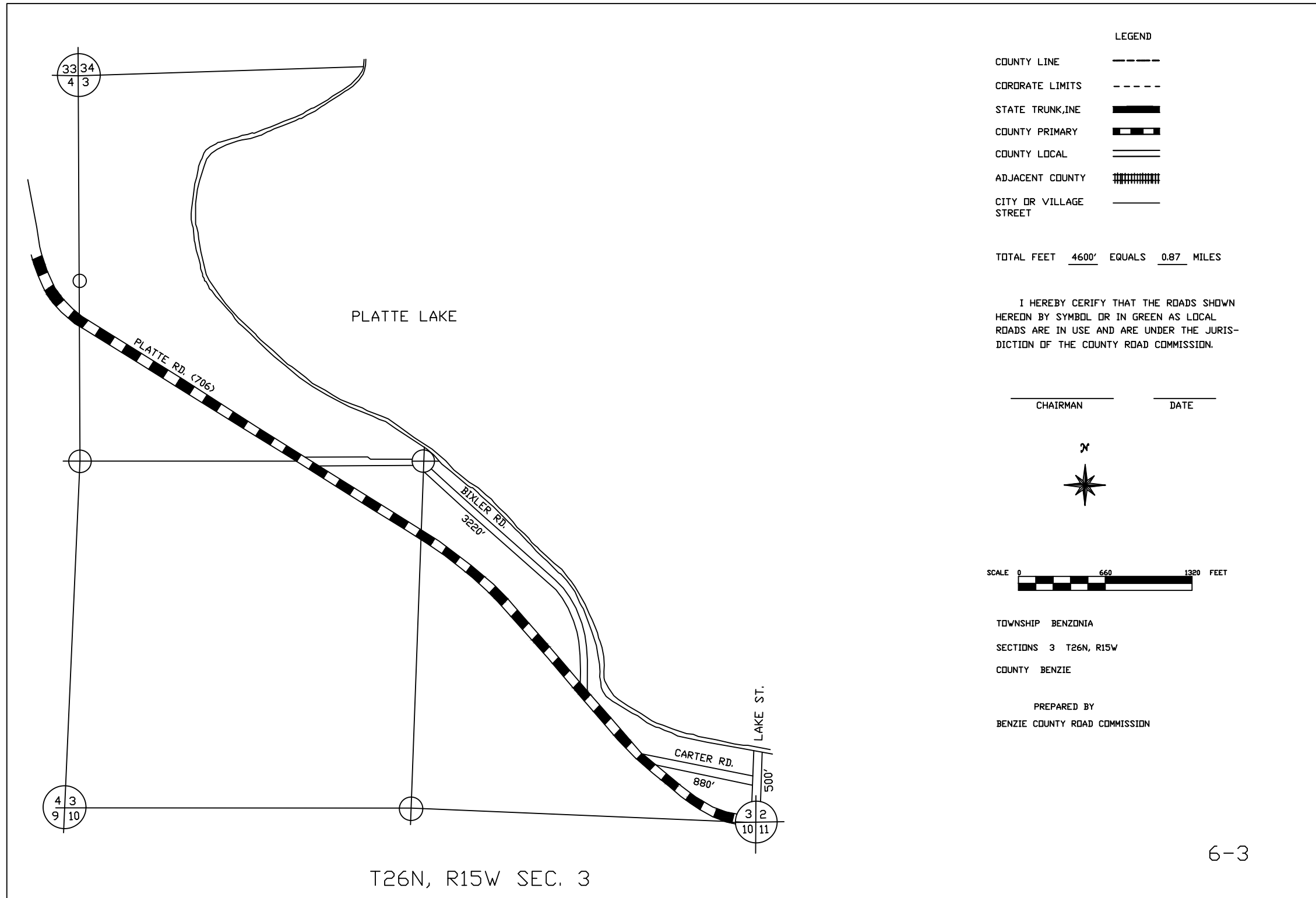
\_\_\_\_\_  
CHAIRMAN                      DATE



TOWNSHIP BENZONIA  
SECTIONS 9 & 11 T26N, R15W  
COUNTY BENZIE

PREPARED BY  
BENZIE COUNTY ROAD COMMISSION

T26N, R15W SEC. 2 & 11



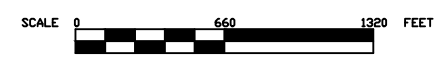
LEGEND

- COUNTY LINE -----
- CORPORATE LIMITS - - - - -
- STATE TRUNKLINE **—————**
- COUNTY PRIMARY **—————**
- COUNTY LOCAL —————
- ADJACENT COUNTY **|||||**
- CITY OR VILLAGE STREET —————

TOTAL FEET 4600' EQUALS 0.87 MILES

I HEREBY CERTIFY THAT THE ROADS SHOWN HEREON BY SYMBOL OR IN GREEN AS LOCAL ROADS ARE IN USE AND ARE UNDER THE JURISDICTION OF THE COUNTY ROAD COMMISSION.

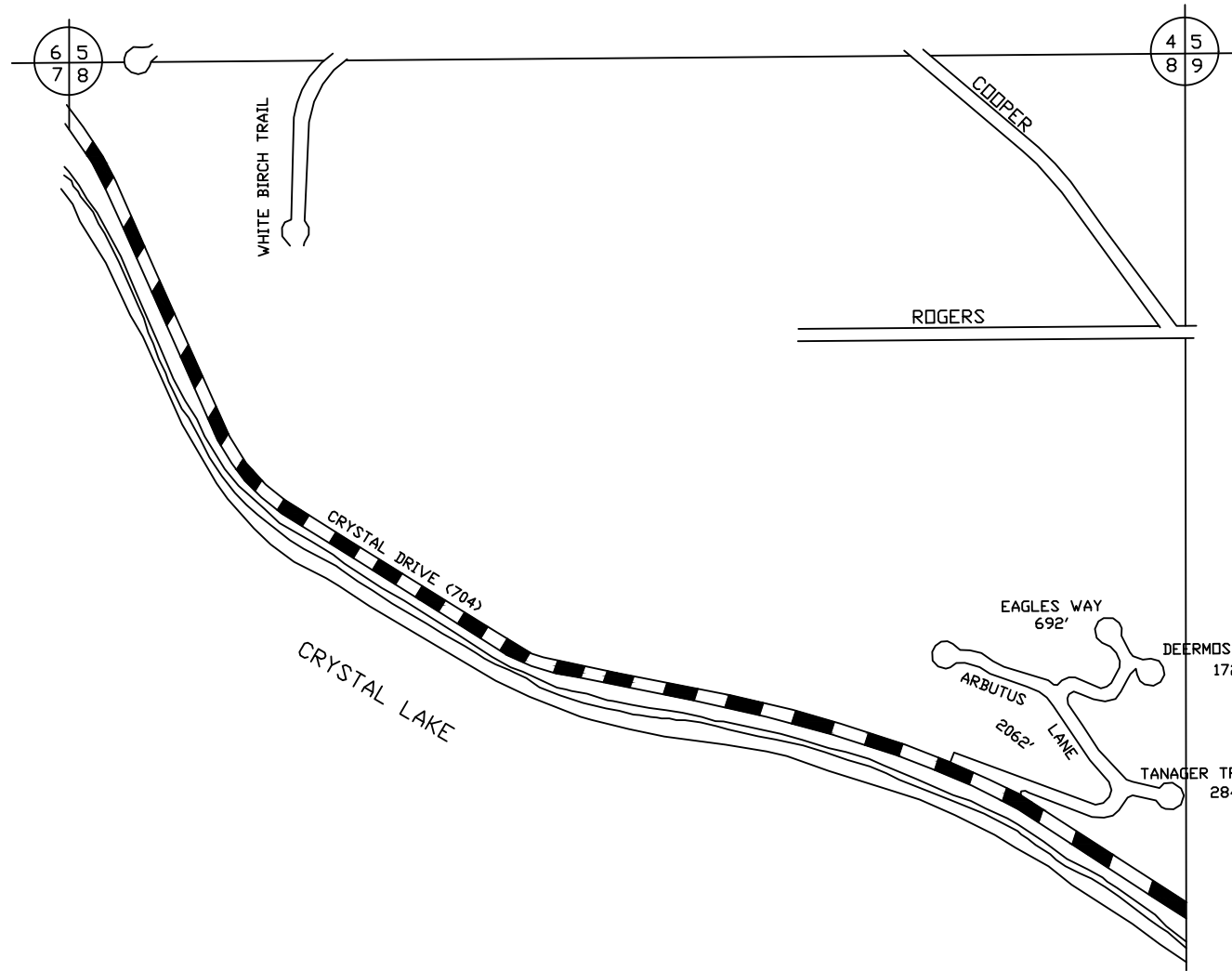
\_\_\_\_\_  
CHAIRMAN                      DATE



TOWNSHIP BENZONIA  
SECTIONS 3 T26N, R15W  
COUNTY BENZIE

PREPARED BY  
BENZIE COUNTY ROAD COMMISSION

T26N, R15W SEC. 3



LEGEND

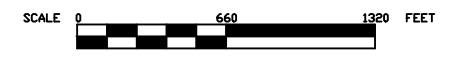
COUNTY LINE	-----
CORPORATE LIMITS	-----
STATE TRUNKLINE	=====
COUNTY PRIMARY	===== ===== =====
COUNTY LOCAL	===== =====
ADJACENT COUNTY	
CITY OR VILLAGE STREET	-----

TOTAL FEET 3210' EQUALS 0.61 MILES

I HEREBY CERTIFY THAT THE ROADS SHOWN HEREON BY SYMBOL OR IN GREEN AS LOCAL ROADS ARE IN USE AND ARE UNDER THE JURISDICTION OF THE COUNTY ROAD COMMISSION.

\_\_\_\_\_  
CHAIRMAN

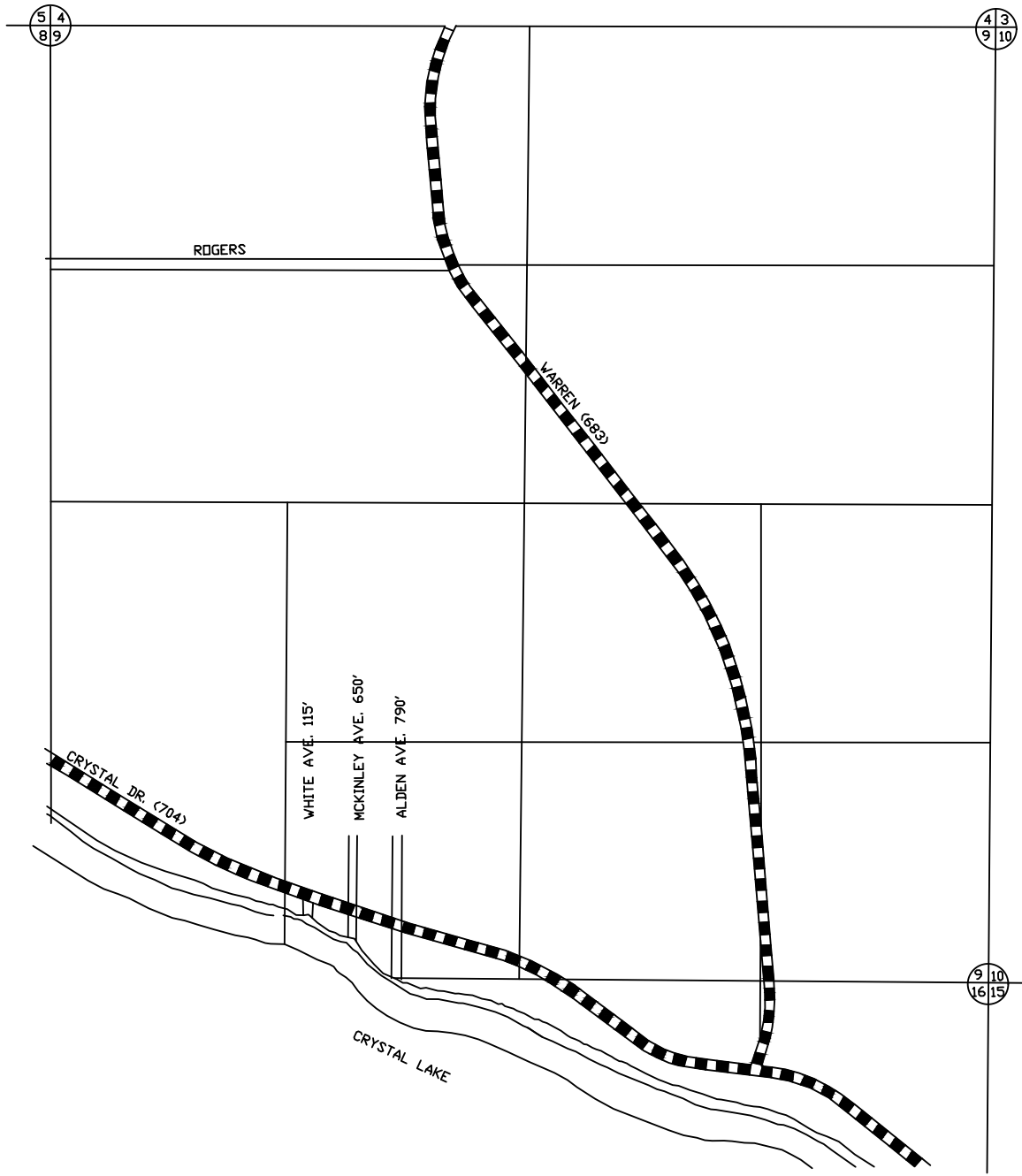
\_\_\_\_\_  
DATE



TOWNSHIP LAKE  
SECTION 8 T26N, R15W  
COUNTY BENZIE

PREPARED BY  
BENZIE COUNTY ROAD COMMISSION

T26N, R15W SEC. 8



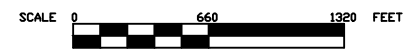
T26N, R15W

LEGEND	
COUNTY LINE	-----
CDORATE LIMITS	-----
STATE TRUNK,INE	—————
COUNTY PRIMARY	——— ——— ———
COUNTY LOCAL	=====
ADJACENT COUNTY	#####
CITY OR VILLAGE STREET	—————

TOTAL FEET 1555' EQUALS 0.29 MILES

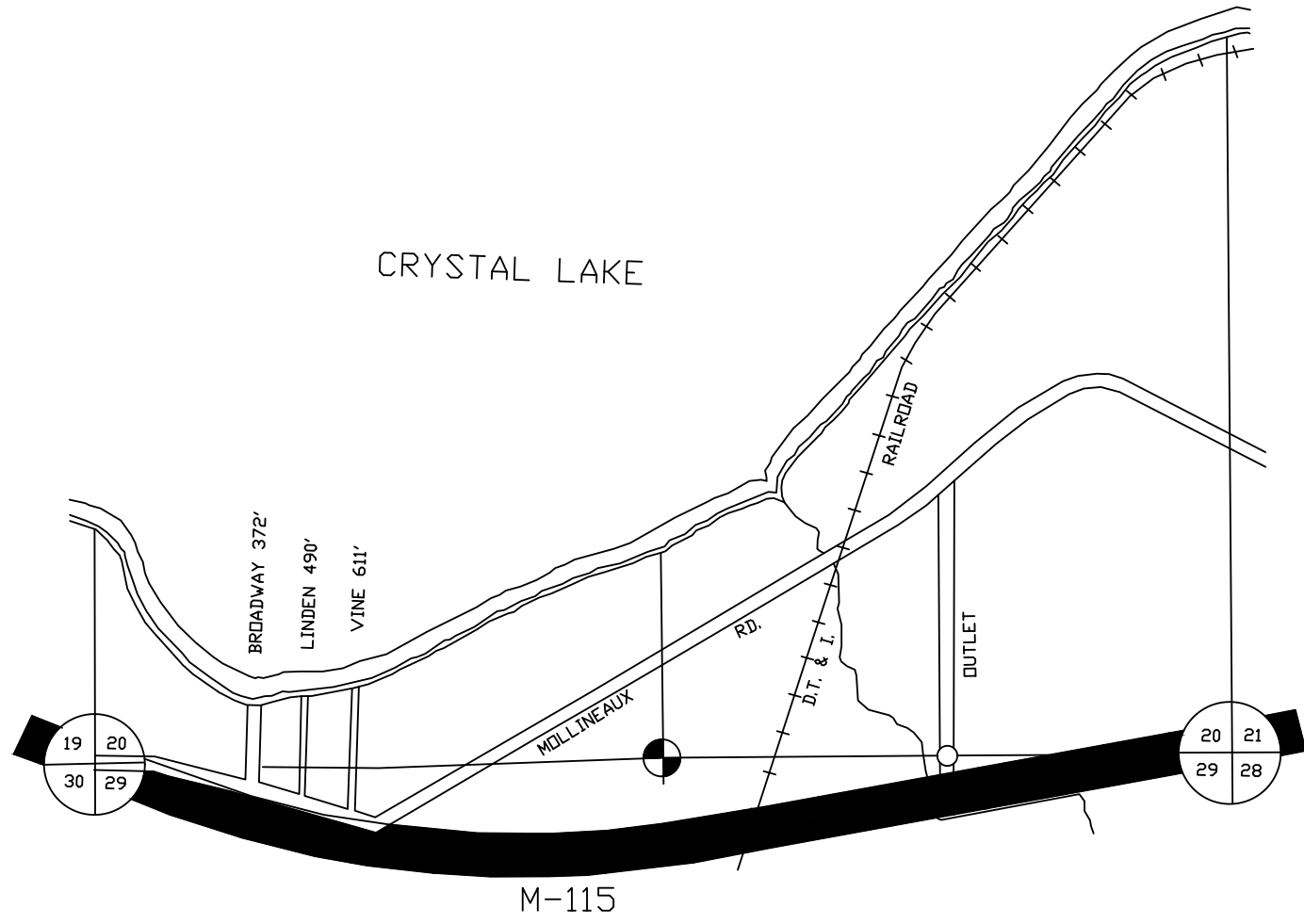
I HEREBY CERIFY THAT THE ROADS SHOWN  
HEREON BY SYMBOL OR IN GREEN AS LOCAL  
ROADS ARE IN USE AND ARE UNDER THE JURIS-  
DICTION OF THE COUNTY ROAD COMMISSION.

\_\_\_\_\_  
CHAIRMAN                      DATE



TOWNSHIP BENZONIA  
SECTION 9 T26N, R15W  
COUNTY BENZIE

PREPARED BY  
BENZIE COUNTY ROAD COMMISSION

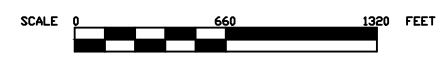


- LEGEND
- COUNTY LINE
  - CORORATE LIMITS
  - STATE TRUNK,INE
  - COUNTY PRIMARY
  - COUNTY LOCAL
  - ADJACENT COUNTY
  - CITY OR VILLAGE STREET

TOTAL FEET 1473' EQUALS 0.28 MILES

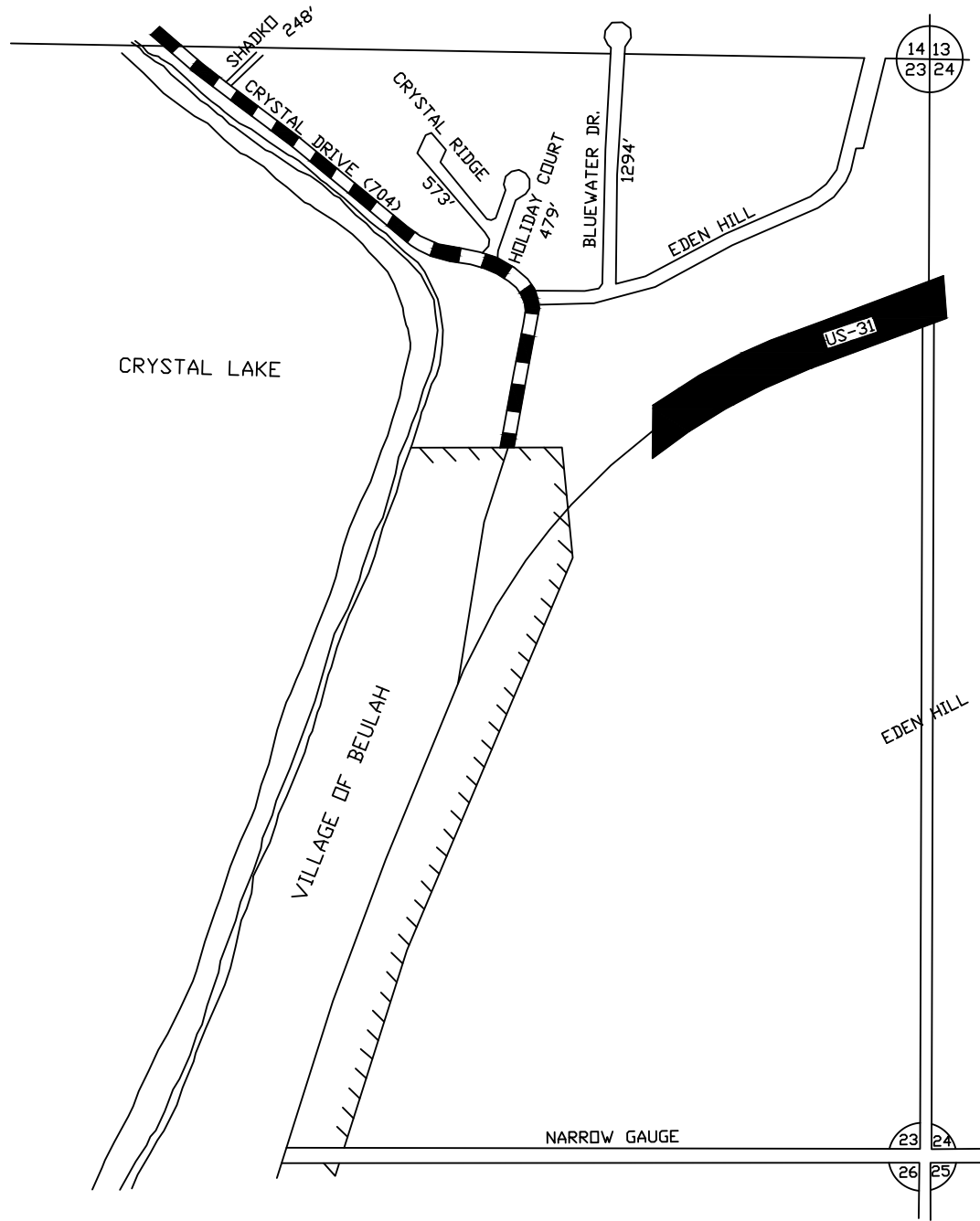
I HEREBY CERIFY THAT THE ROADS SHOWN HEREDON BY SYMBOL OR IN GREEN AS LOCAL ROADS ARE IN USE AND ARE UNDER THE JURIS- DICTION OF THE COUNTY ROAD COMMISSION.

CHAIRMAN \_\_\_\_\_ DATE \_\_\_\_\_



TOWNSHIP CRYSTAL LAKE  
SECTION 20 T26N, R15W  
COUNTY BENZIE

PREPARED BY  
BENZIE COUNTY ROAD COMMISSION



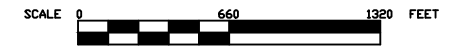
LEGEND

- COUNTY LINE
- CORPORATE LIMITS
- STATE TRUNK LINE
- COUNTY PRIMARY
- COUNTY LOCAL
- ADJACENT COUNTY
- CITY OR VILLAGE STREET

TOTAL FEET 2594' EQUALS 0.49 MILES

I HEREBY CERTIFY THAT THE ROADS SHOWN  
HEREON BY SYMBOL OR IN GREEN AS LOCAL  
ROADS ARE IN USE AND ARE UNDER THE JURIS-  
DICTION OF THE COUNTY ROAD COMMISSION.

\_\_\_\_\_  
CHAIRMAN                      DATE

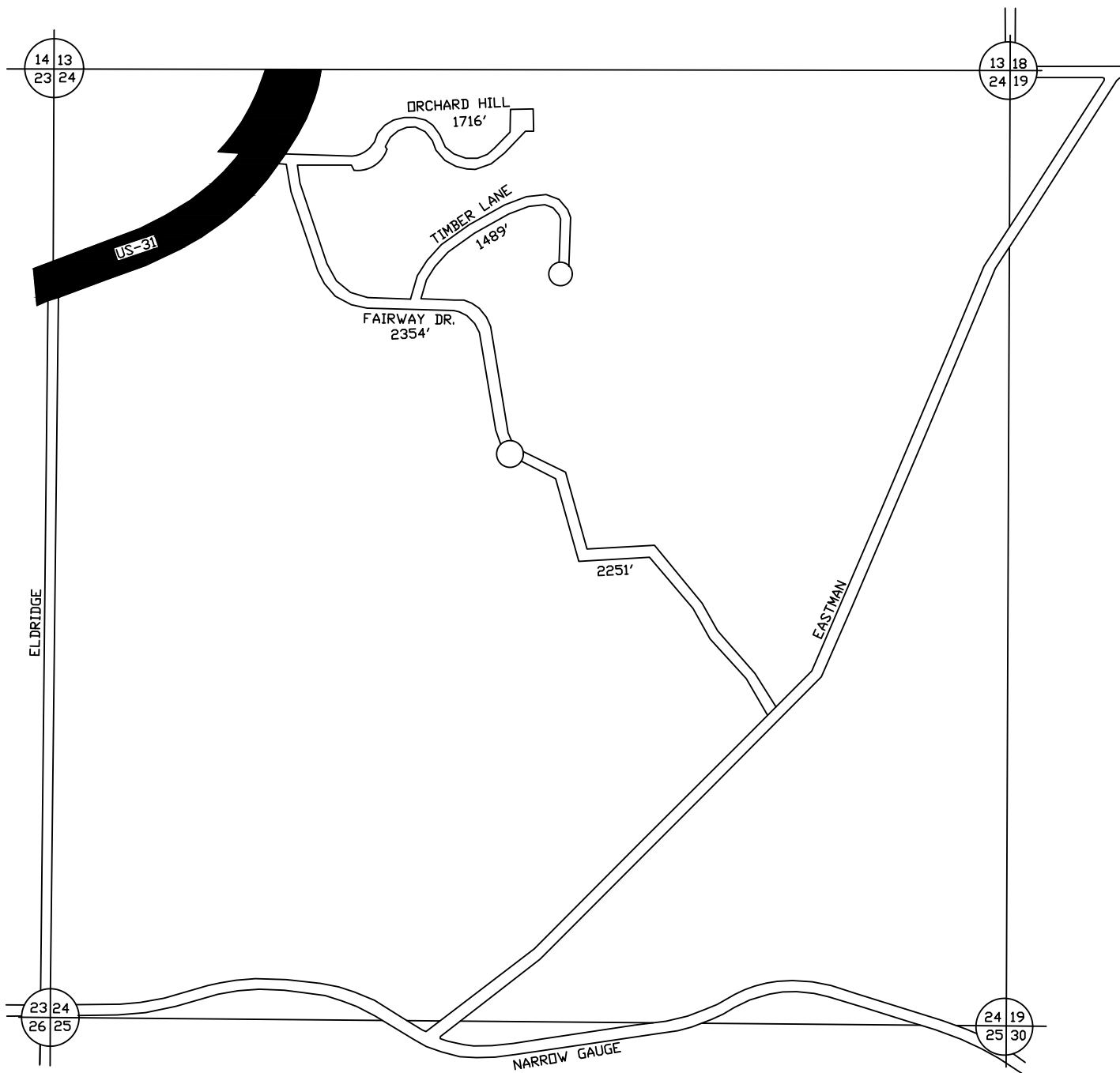


TOWNSHIP BENZONIA  
SECTION 23 T26N, R15W  
COUNTY BENZIE

PREPARED BY  
BENZIE COUNTY ROAD COMMISSION

T26N, R15W SEC. 23





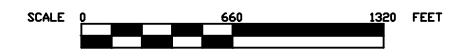
LEGEND

COUNTY LINE	----
CORPORATE LIMITS	- - - -
STATE TRUNK LINE	██████
COUNTY PRIMARY	▬▬▬▬
COUNTY LOCAL	▬▬▬▬
ADJACENT COUNTY	
CITY OR VILLAGE STREET	_____

TOTAL FEET 7810' EQUALS 1.48 MILES

I HEREBY CERTIFY THAT THE ROADS SHOWN HEREON BY SYMBOL OR IN GREEN AS LOCAL ROADS ARE IN USE AND ARE UNDER THE JURISDICTION OF THE COUNTY ROAD COMMISSION.

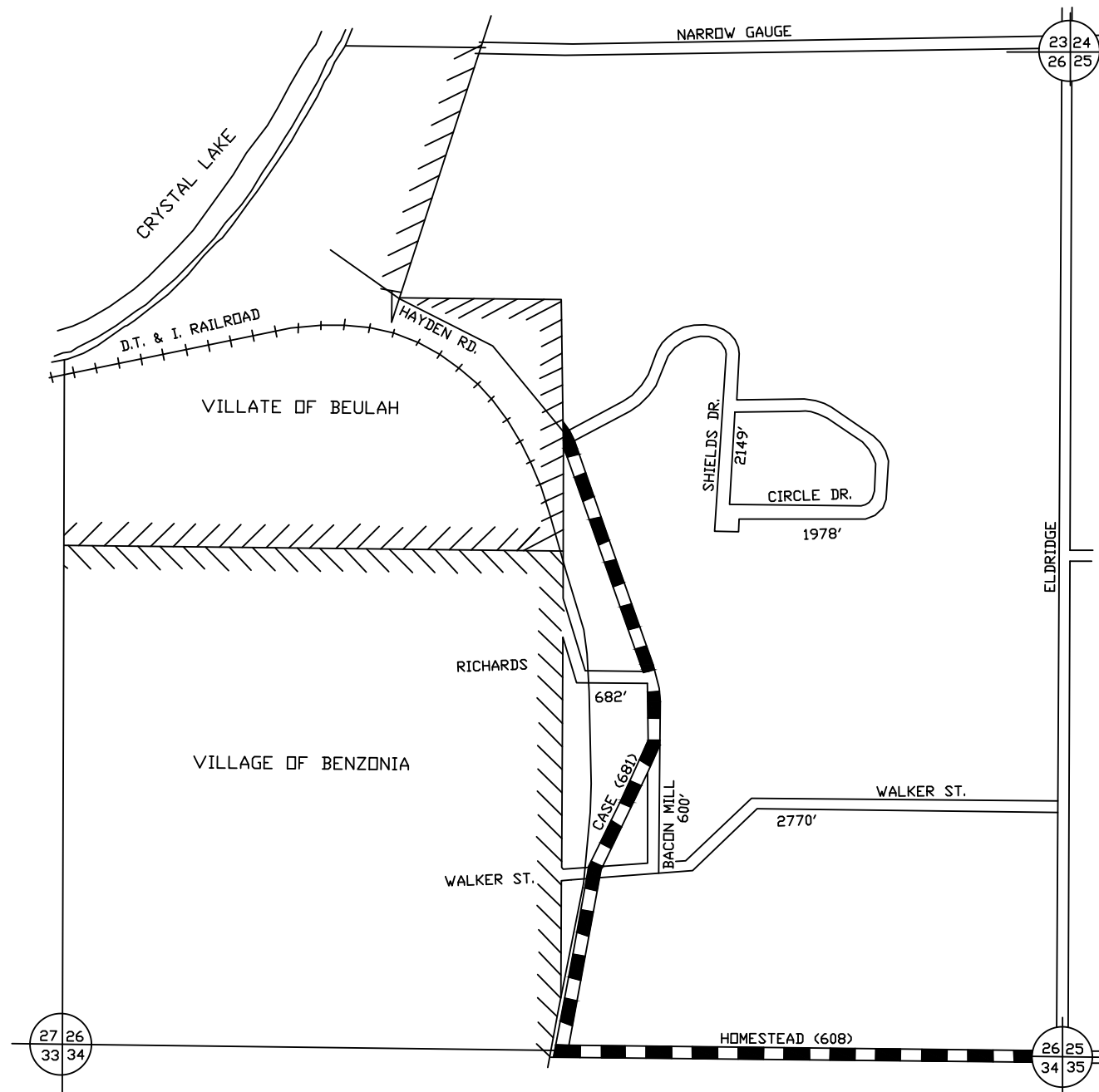
\_\_\_\_\_  
CHAIRMAN                      DATE



TOWNSHIP BENZONIA  
SECTION 24 T26N, R15W  
COUNTY BENZIE

PREPARED BY  
BENZIE COUNTY ROAD COMMISSION

T26N, R15W SEC. 24



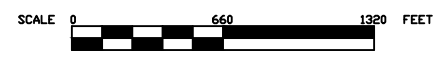
LEGEND

COUNTY LINE	----
CORDORATE LIMITS	----
STATE TRUNK,INE	=====
COUNTY PRIMARY	▬▬▬▬▬▬
COUNTY LOCAL	=====
ADJACENT COUNTY	
CITY OR VILLAGE	-----

TOTAL FEET 8179' EQUALS 1.55 MILES

I HEREBY CERIFY THAT THE ROADS SHOWN  
HEREON BY SYMBOL OR IN GREEN AS LOCAL  
ROADS ARE IN USE AND ARE UNDER THE JURIS-  
DICTION OF THE COUNTY ROAD COMMISSION.

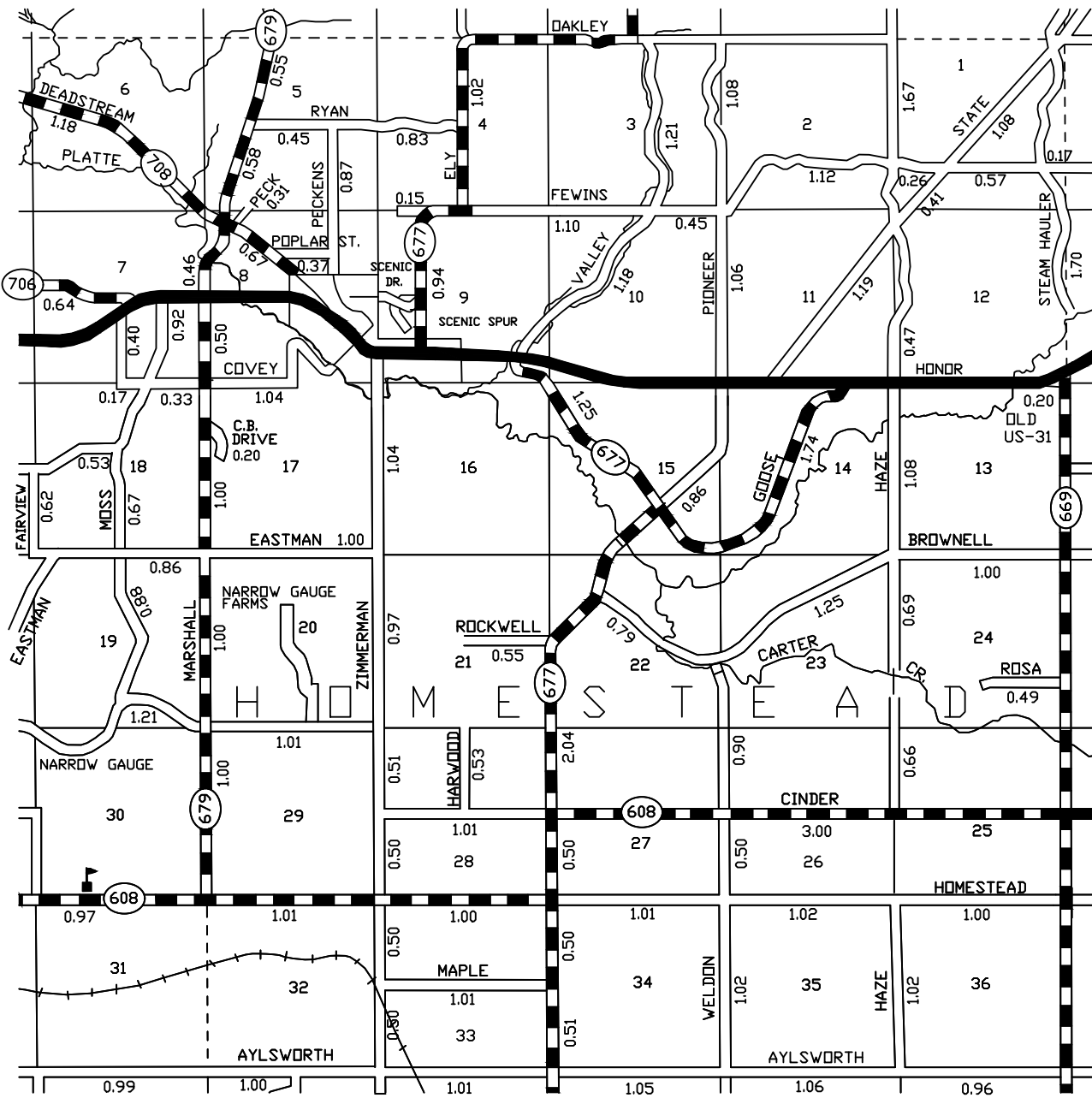
\_\_\_\_\_  
CHAIRMAN                      DATE



TOWNSHIP BENZONIA  
SECTION 26 T26N, R15W  
COUNTY BENZIE

PREPARED BY  
BENZIE COUNTY ROAD COMMISSION

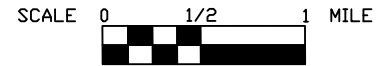
T26N, R15W SEC. 26



LEGEND

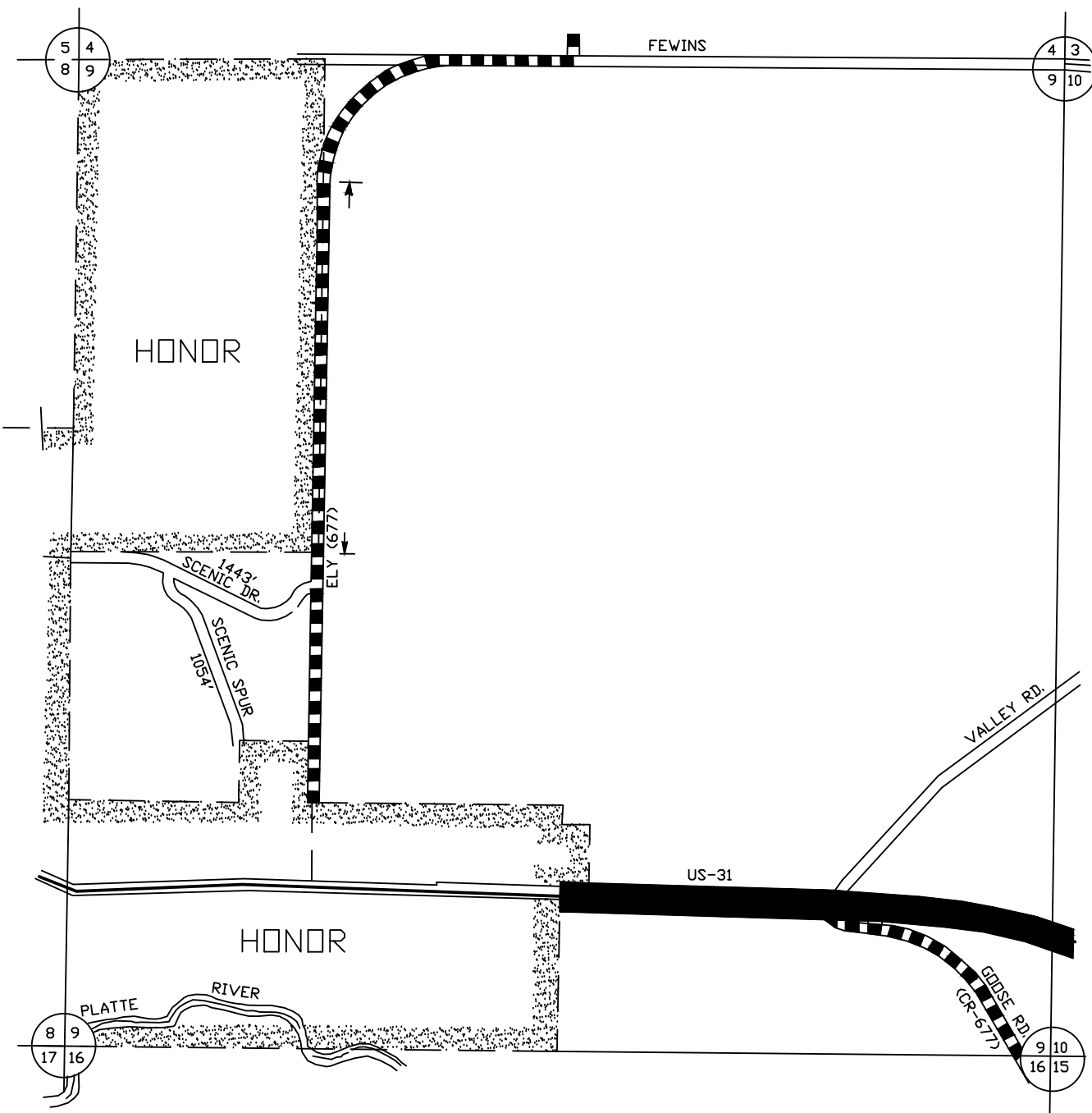
- COUNTY LINE
- COORDINATE LIMITS
- STATE TRUNK LINE
- COUNTY PRIMARY
- COUNTY LOCAL
- ADJACENT COUNTY
- CITY OR VILLAGE STREET

POLITICAL TOWNSHIP	PRIMARY	LOCAL
BENZONIA TWP.	2.79	7.58
HOMESTEAD TWP.	19.27	46.64
VILLAGE OF HONOR	0	0
<b>TOTAL</b>	<b>22.06</b>	<b>54.22</b>



BENZIE CO. - 10 T26N, R15W

PREPARED BY  
 BENZIE COUNTY ROAD COMMISSION



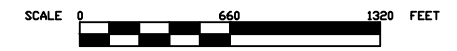
LEGEND

- COUNTY LINE
- CORPORATE LIMITS
- STATE TRUNK LINE
- COUNTY PRIMARY
- COUNTY LOCAL
- ADJACENT COUNTY
- CITY OR VILLAGE

TOTAL FEET 2497' EQUALS 0.47 MILES

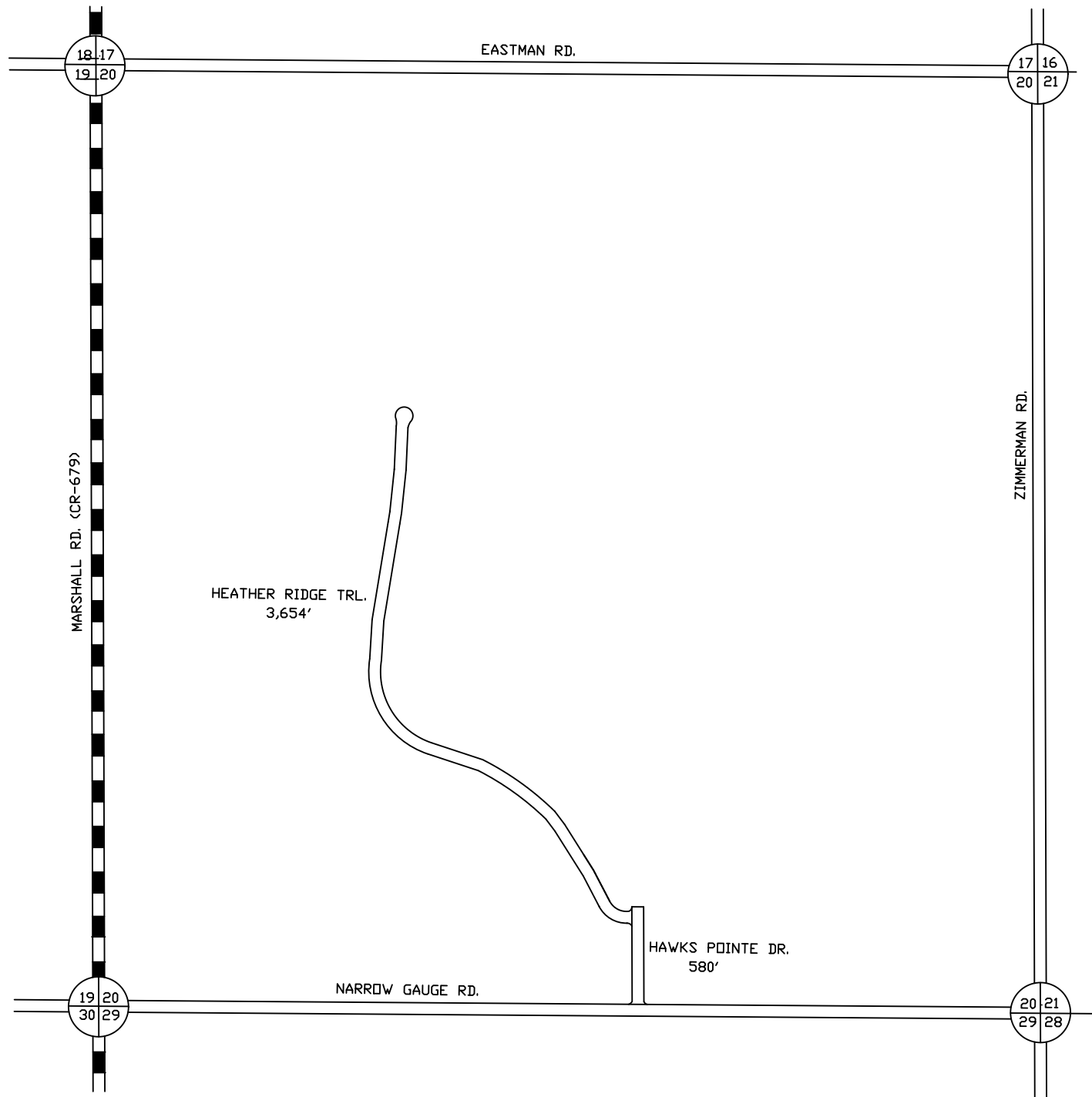
I HEREBY CERTIFY THAT THE ROADS SHOWN  
HEREON BY SYMBOL OR IN GREEN AS LOCAL  
ROADS ARE IN USE AND ARE UNDER THE JURIS-  
DICTION OF THE COUNTY ROAD COMMISSION.

\_\_\_\_\_  
CHAIRMAN                      DATE



TOWNSHIP HOMESTEAD  
SECTION 9 T26N, R14W  
COUNTY BENZIE

PREPARED BY  
BENZIE COUNTY ROAD COMMISSION

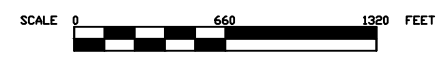


- LEGEND
- COUNTY LINE -----
  - CORPORATE LIMITS -----
  - STATE TRUNK LINE **████████**
  - COUNTY PRIMARY **▬▬▬▬**
  - COUNTY LOCAL **▬▬▬▬**
  - ADJACENT COUNTY **|||||**
  - CITY OR VILLAGE **\_\_\_\_\_**

TOTAL FEET 4234' EQUALS 0.80 MILES

I HEREBY CERTIFY THAT THE ROADS SHOWN  
HEREON BY SYMBOL OR IN GREEN AS LOCAL  
ROADS ARE IN USE AND ARE UNDER THE JURIS-  
DICTION OF THE COUNTY ROAD COMMISSION.

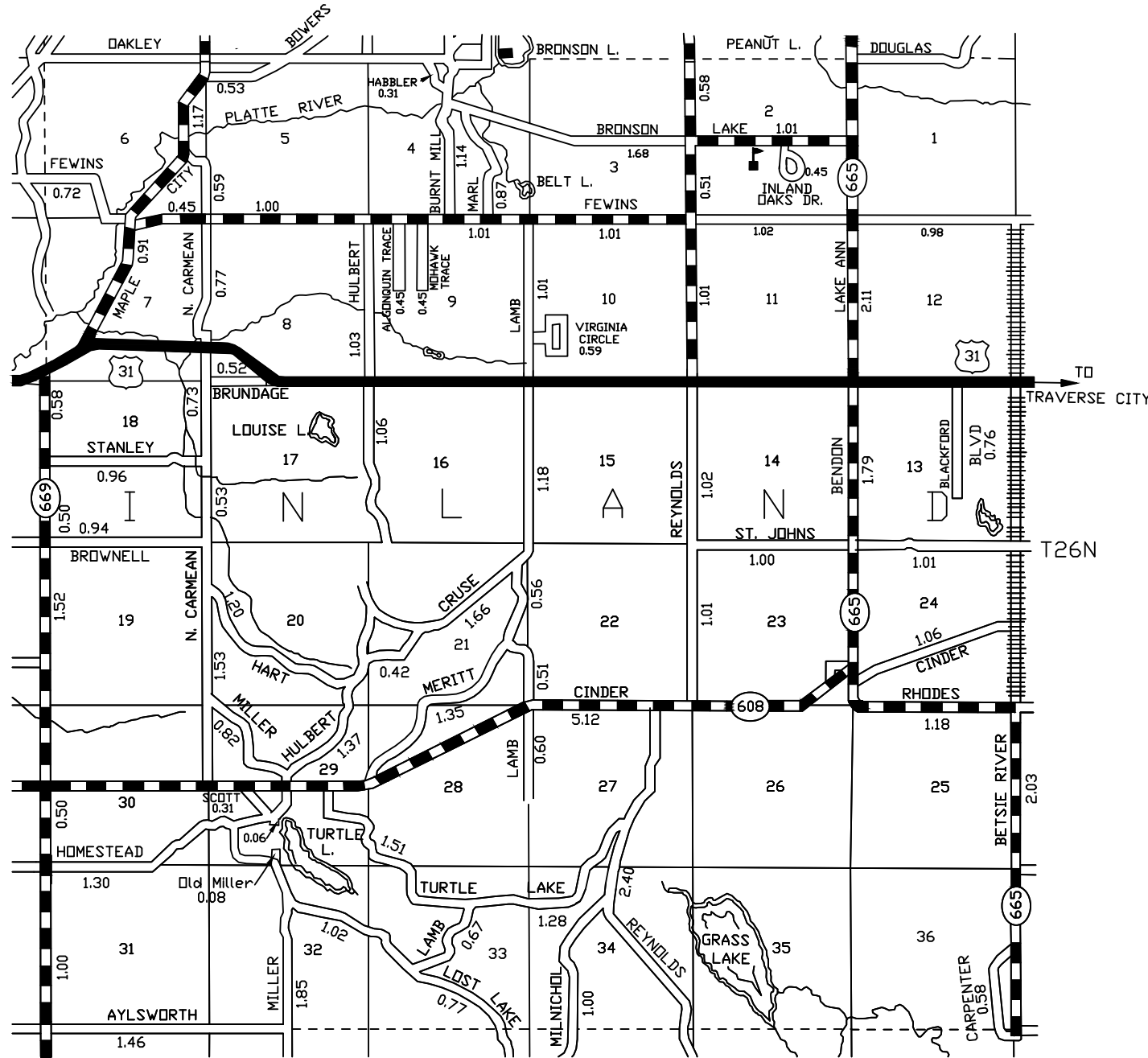
\_\_\_\_\_  
CHAIRMAN                      DATE



TOWNSHIP HOMESTEAD  
SECTION 20 T26N, R14W  
COUNTY BENZIE

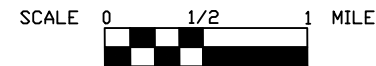
PREPARED BY  
BENZIE COUNTY ROAD COMMISSION

T26N, R14W SEC. 20



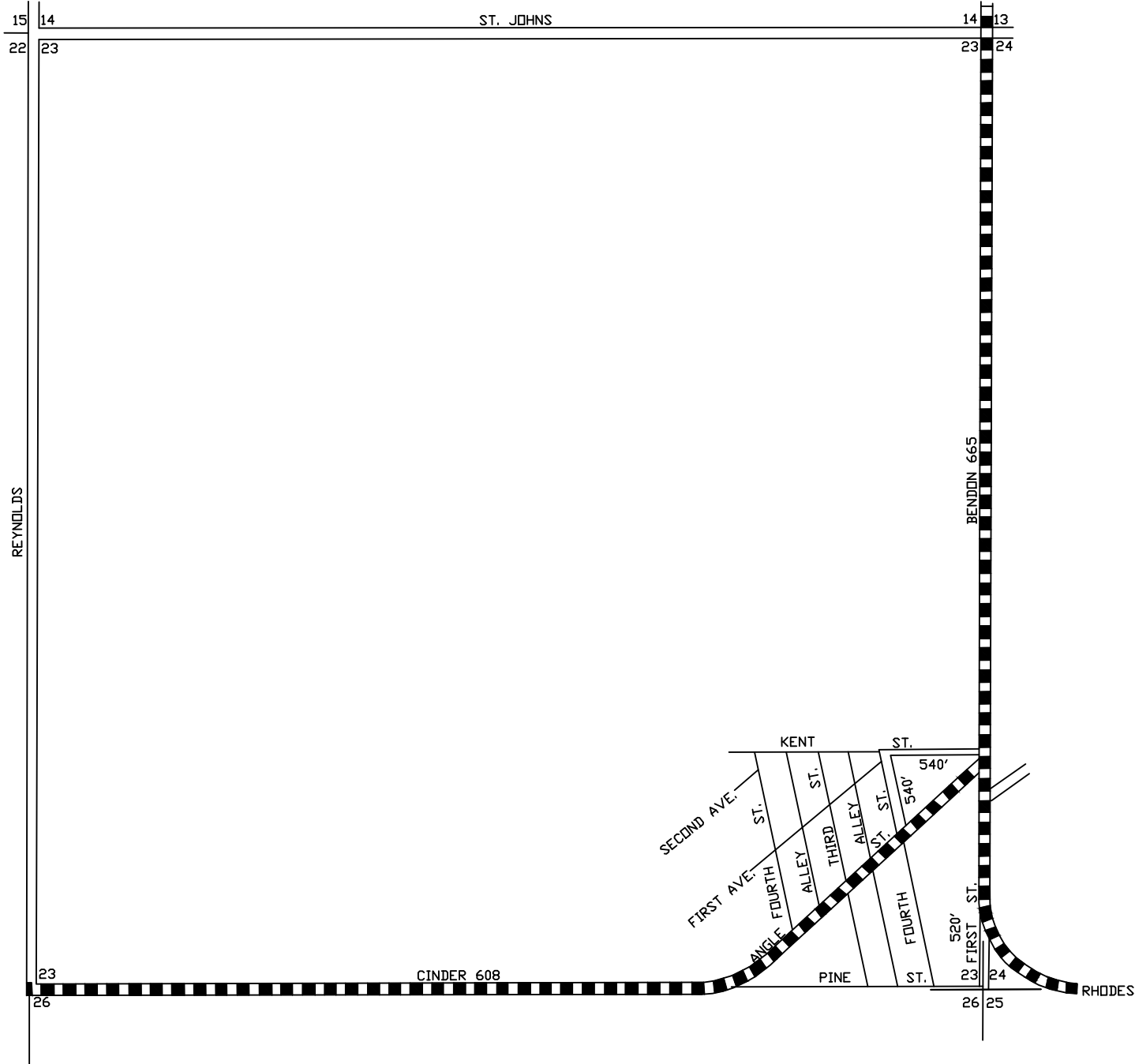
- LEGEND**
- COUNTY LINE -----
  - CORPORATE LIMITS - - - - -
  - STATE TRUNK LINE **█**
  - COUNTY PRIMARY **▬▬**
  - COUNTY LOCAL **▬▬▬▬**
  - ADJACENT COUNTY **|||||**
  - CITY OR VILLAGE STREET **▬**

POLITICAL TOWNSHIP	PRIMARY	LOCAL
INLAND TWP.	24.99	48.68



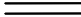




BENZIE CO. - 10 T26N, R13W

PREPARED BY  
 BENZIE COUNTY ROAD COMMISSION



LEGEND

- COUNTY LINE -----
- CORPORATE LIMITS - - - - -
- STATE TRUNK LINE 
- COUNTY PRIMARY 
- COUNTY LOCAL 
- ADJACENT COUNTY 
- CITY OR VILLAGE 

TOTAL FEET 1600' EQUALS 0.30 MILES

I HEREBY CERIFY THAT THE ROADS SHOWN  
 HEREDN BY SYMBOL OR IN GREEN AS LOCAL  
 ROADS ARE IN USE AND ARE UNDER THE JURIS-  
 DICTION OF THE COUNTY ROAD COMMISSION.

\_\_\_\_\_  
 CHAIRMAN                      DATE



TOWNSHIP INLAND  
 SECTION 23 T26N, R13W  
 COUNTY BENZIE

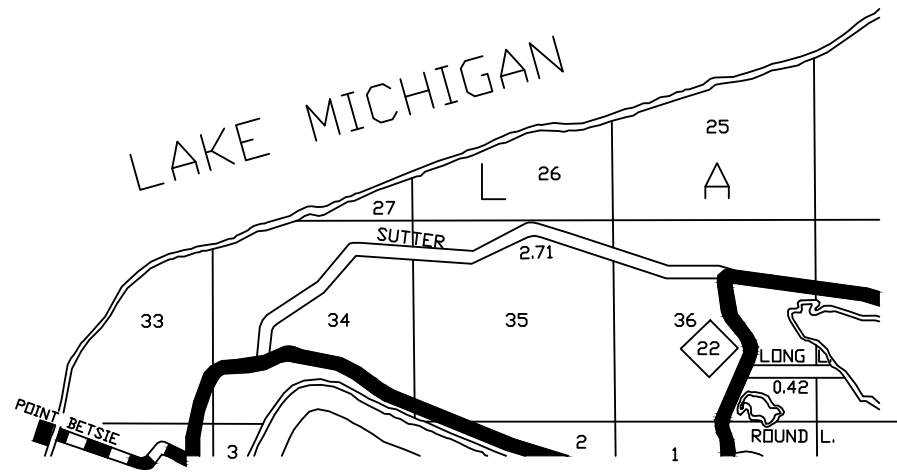
PREPARED BY  
 BENZIE COUNTY ROAD COMMISSION

T26N, R13W SEC. 23

LEGEND

- COUNTY LINE -----
- CORPORATE LIMITS - - - - -
- STATE TRUNKLINE ████████
- COUNTY PRIMARY ▬▬▬▬
- COUNTY LOCAL ▬▬▬▬
- ADJACENT COUNTY |||||
- CITY OR VILLAGE STREET ————

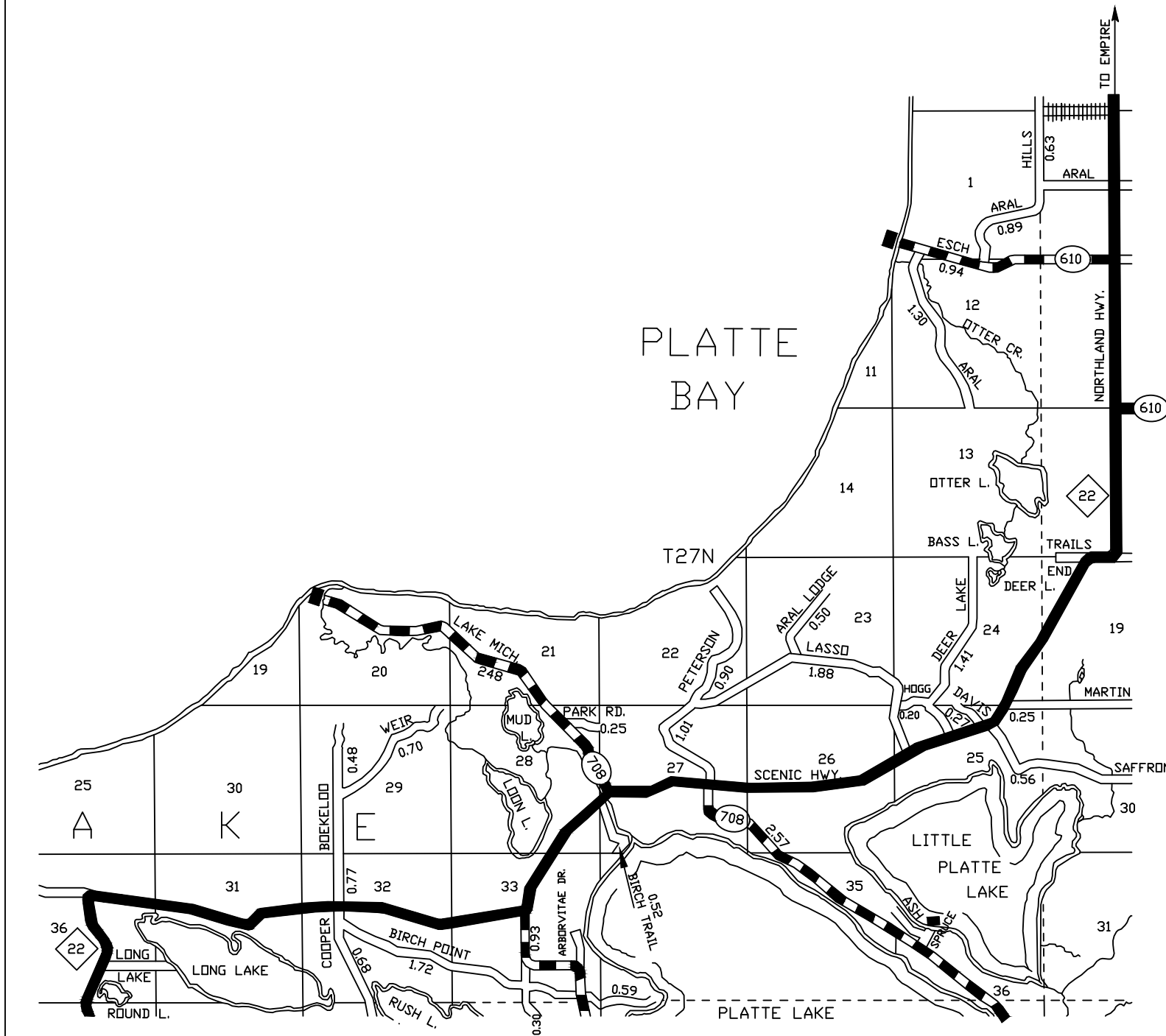
POLITICAL TOWNSHIP	PRIMARY	LOCAL
LAKE TWP.	0.00	3.13



BENZIE CO. - 10 T27N, R16W

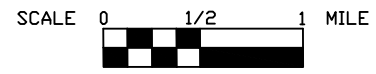
PREPARED BY  
 BENZIE COUNTY ROAD COMMISSION





- LEGEND
- COUNTY LINE
  - CORPORATE LIMITS
  - STATE TRUNKLINE
  - COUNTY PRIMARY
  - COUNTY LOCAL
  - ADJACENT COUNTY
  - CITY OR VILLAGE STREET

POLITICAL TOWNSHIP	PRIMARY	LOCAL
LAKE TWP.	6.92	15.81



BENZIE CO. - 10 T27N, R15W

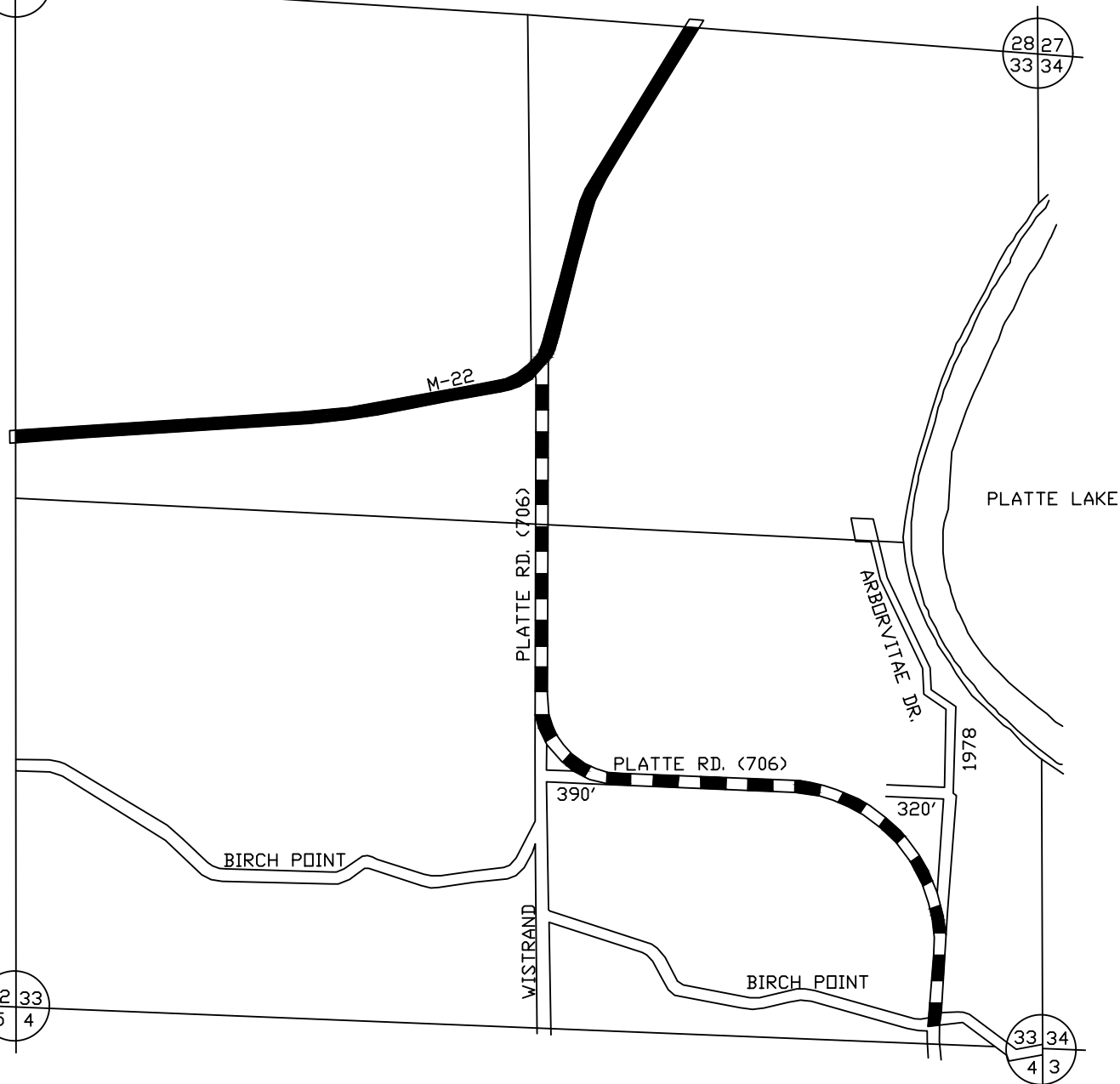
PREPARED BY  
 BENZIE COUNTY ROAD COMMISSION

29 28  
32 33

28 27  
33 34

32 33  
5 4

33 34  
4 3



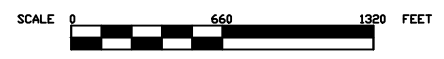
LEGEND

- COUNTY LINE
- COORDINATE LIMITS
- STATE TRUNK LINE
- COUNTY PRIMARY
- COUNTY LOCAL
- ADJACENT COUNTY
- CITY OR VILLAGE

TOTAL FEET 2688' EQUALS 0.51 MILES

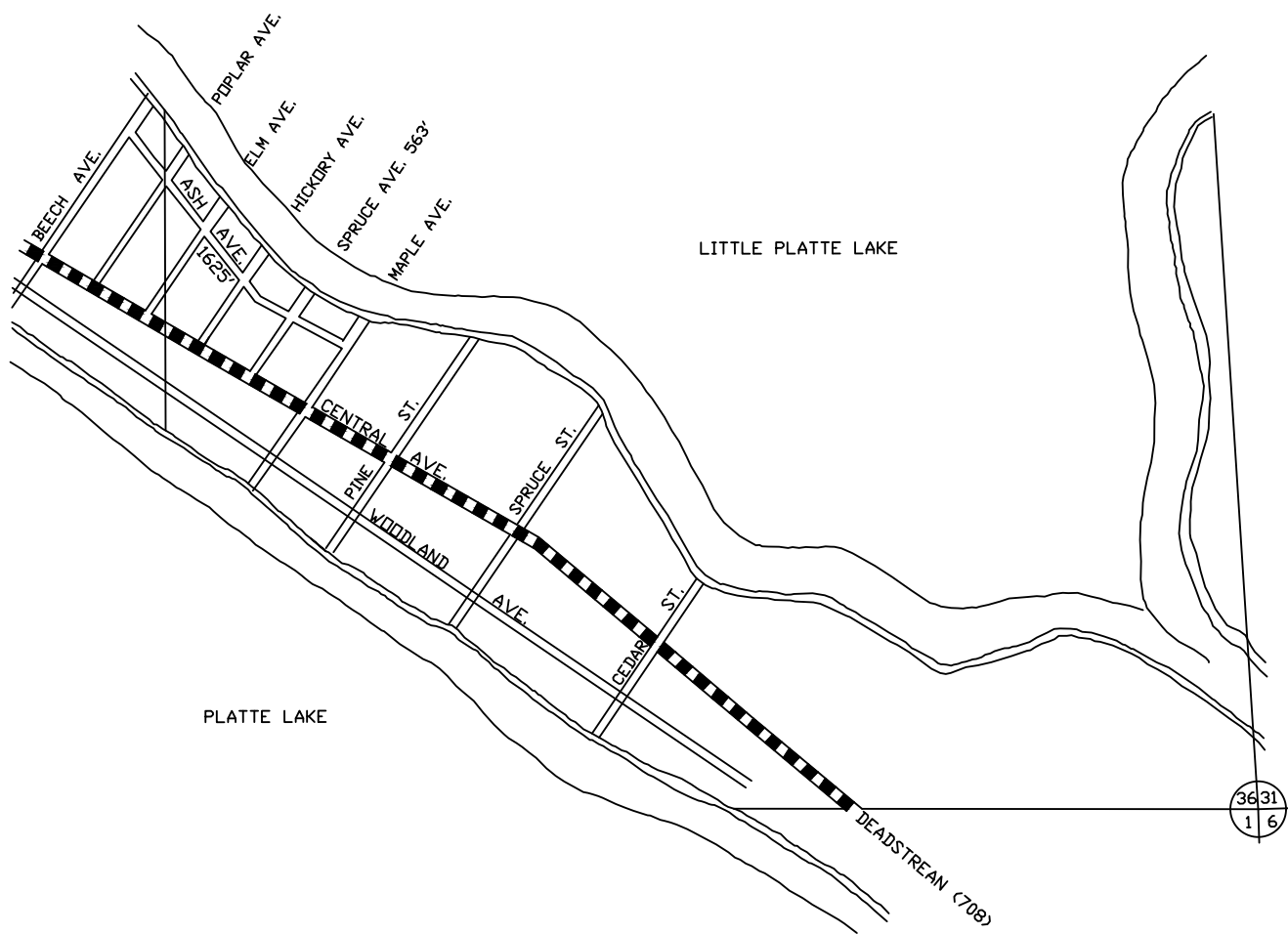
I HEREBY CERTIFY THAT THE ROADS SHOWN  
HEREON BY SYMBOL OR IN GREEN AS LOCAL  
ROADS ARE IN USE AND ARE UNDER THE JURIS-  
DICTION OF THE COUNTY ROAD COMMISSION.

\_\_\_\_\_  
CHAIRMAN                      DATE



TOWNSHIP LAKE  
SECTION 33 T27N, R15W  
COUNTY BENZIE

PREPARED BY  
BENZIE COUNTY ROAD COMMISSION



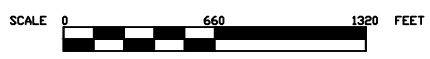
LEGEND

COUNTY LINE	-----
CORDRATE LIMITS	- - - - -
STATE TRUNK,INE	=====
COUNTY PRIMARY	▬▬▬▬▬
COUNTY LOCAL	=====
ADJACENT COUNTY	
CITY OR VILLAGE	_____

TOTAL FEET 2188' EQUALS 0.41 MILES

I HEREBY CERIFY THAT THE ROADS SHOWN  
HEREON BY SYMBOL OR IN GREEN AS LOCAL  
ROADS ARE IN USE AND ARE UNDER THE JURIS-  
DICTION OF THE COUNTY ROAD COMMISSION.

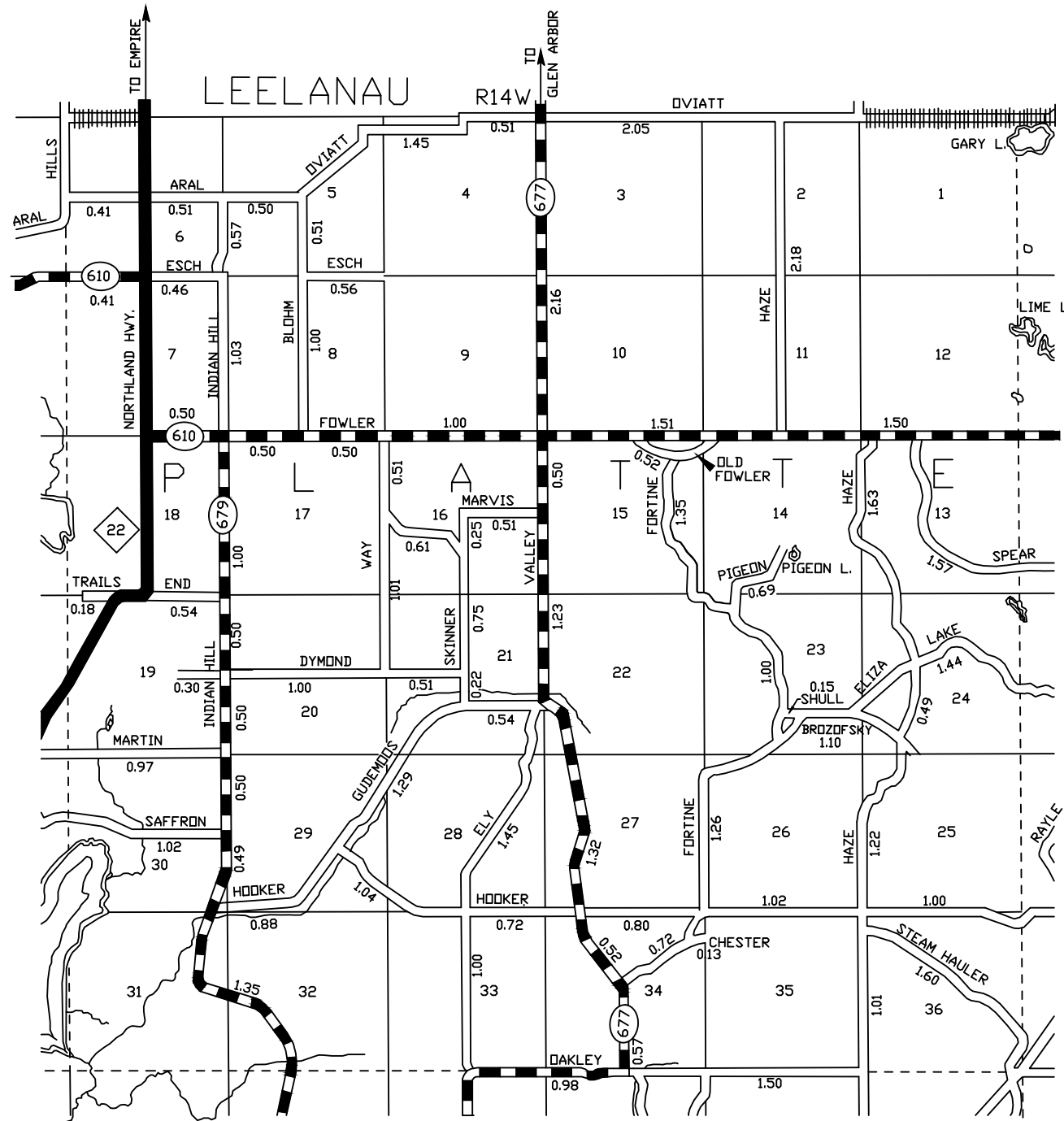
\_\_\_\_\_  
CHAIRMAN                      DATE



TOWNSHIP LAKE  
SECTION 36 T27N, R15W  
COUNTY BENZIE

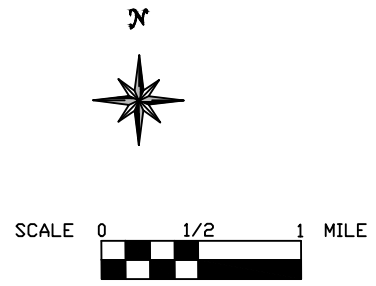
PREPARED BY  
BENZIE COUNTY ROAD COMMISSION

T27N, R15W



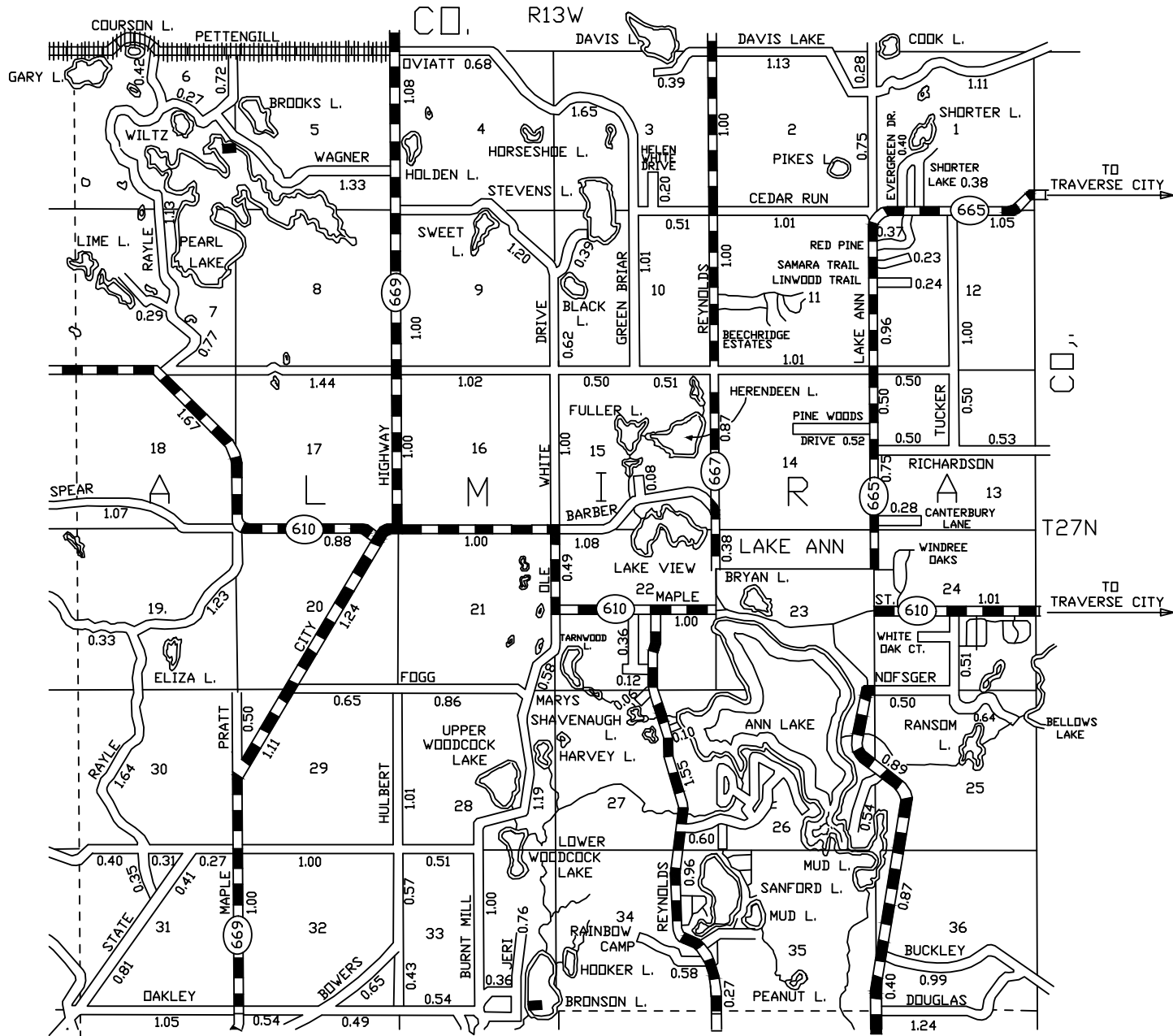
- LEGEND**
- COUNTY LINE
  - CORPORATE LIMITS
  - STATE TRUNK LINE
  - COUNTY PRIMARY
  - COUNTY LOCAL
  - ADJACENT COUNTY
  - CITY OR VILLAGE STREET

POLITICAL TOWNSHIP  
 PLATTE TWP.      PRIMARY 17.54 MILES      LOCAL 47.24 MILES



BENZIE CO. - 10 T27N, R14W

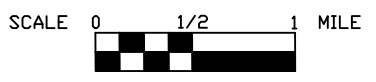
PREPARED BY  
 BENZIE COUNTY ROAD COMMISSION



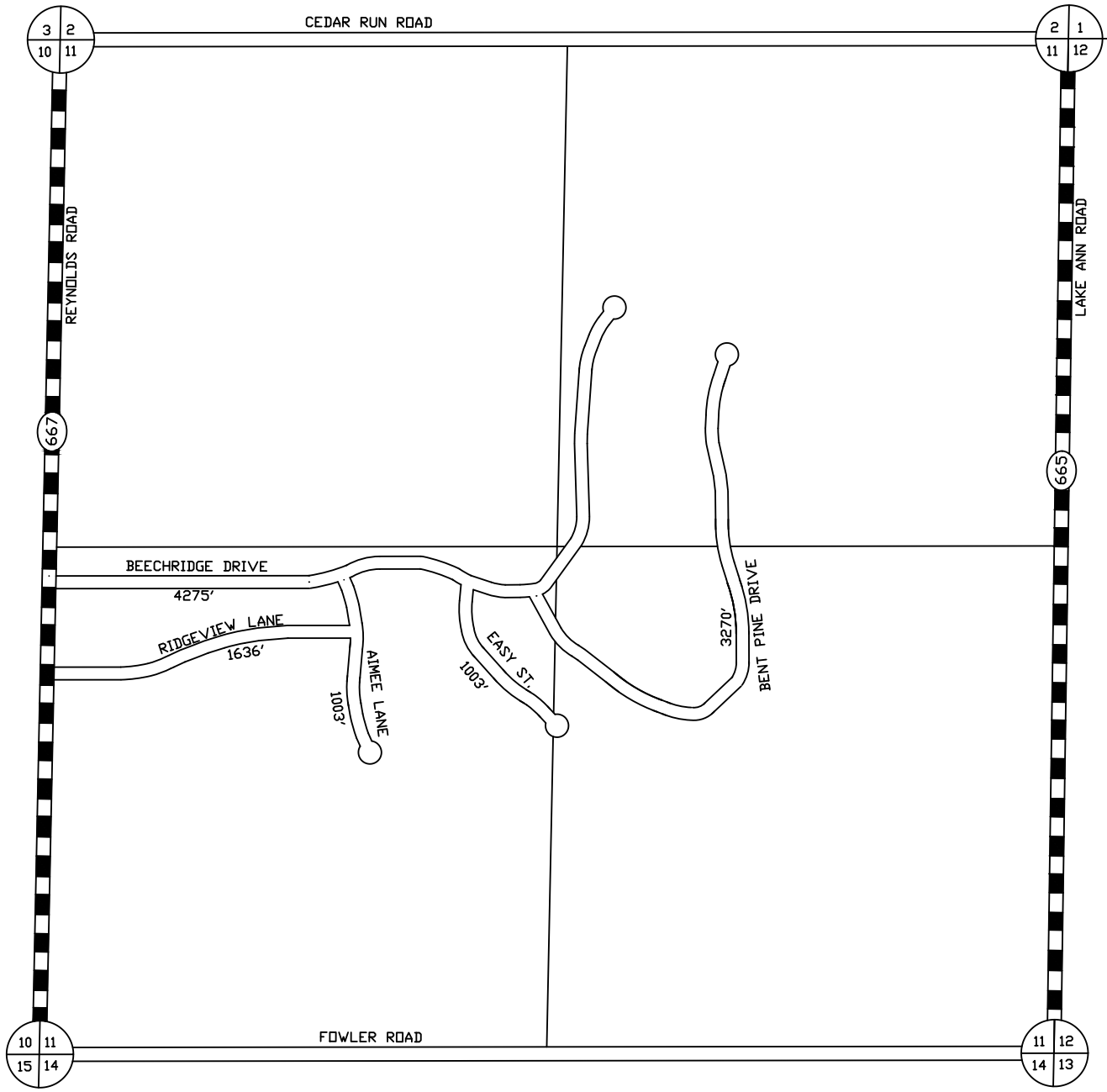
LEGEND

- COUNTY LINE
- CORPORATE LIMITS
- STATE TRUNK LINE
- COUNTY PRIMARY
- COUNTY LOCAL
- ADJACENT COUNTY
- CITY OR VILLAGE STREET

POLITICAL TOWNSHIP  
ALMIRA TWP.                      PRIMARY                      LOCAL  
23.93 MILES                      53.69 MILES



BENZIE CO. - 10 T27N, R13W  
  
PREPARED BY  
BENZIE COUNTY ROAD COMMISSION

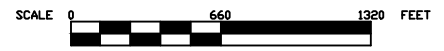


- LEGEND
- COUNTY LINE -----
  - CORDRATE LIMITS - - - - -
  - STATE TRUNK,INE
  - COUNTY PRIMARY
  - COUNTY LOCAL
  - ADJACENT COUNTY
  - CITY OR VILLAGE

TOTAL FEET 11,187' EQUALS 2.12 MILES

I HEREBY CERIFY THAT THE ROADS SHOWN  
 HEREDN BY SYMBOL OR IN GREEN AS LOCAL  
 ROADS ARE IN USE AND ARE UNDER THE JURIS-  
 DICTION OF THE COUNTY ROAD COMMISSION.

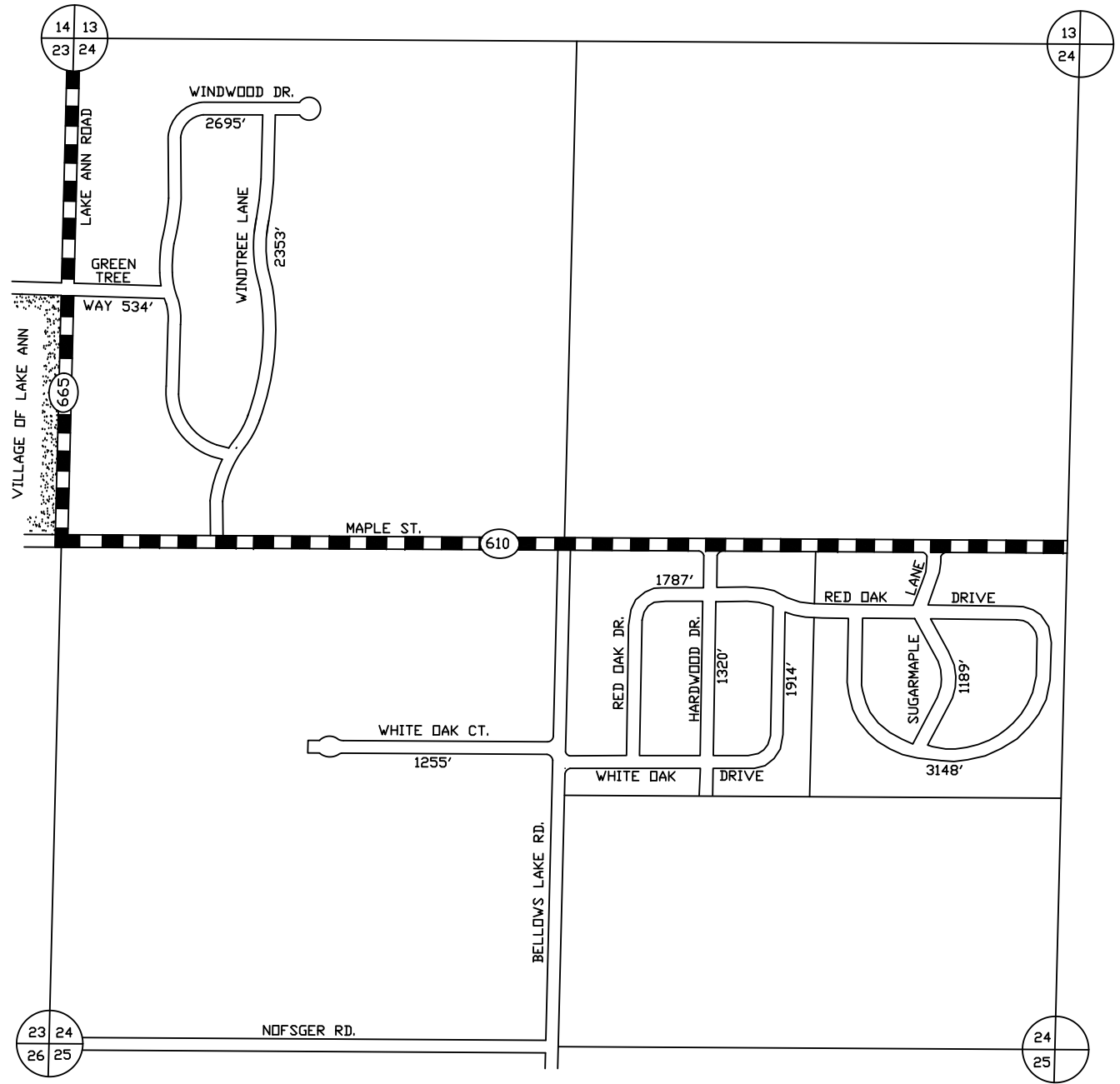
\_\_\_\_\_  
 CHAIRMAN                      DATE



TOWNSHIP ALMIRA  
 SECTION 11 T27N, R13W  
 COUNTY BENZIE

PREPARED BY  
 BENZIE COUNTY ROAD COMMISSION

T27N, R13W SEC. 11



- LEGEND
- COUNTY LINE
  - CORPORATE LIMITS
  - STATE TRUNK LINE
  - COUNTY PRIMARY
  - COUNTY LOCAL
  - ADJACENT COUNTY
  - CITY OR VILLAGE

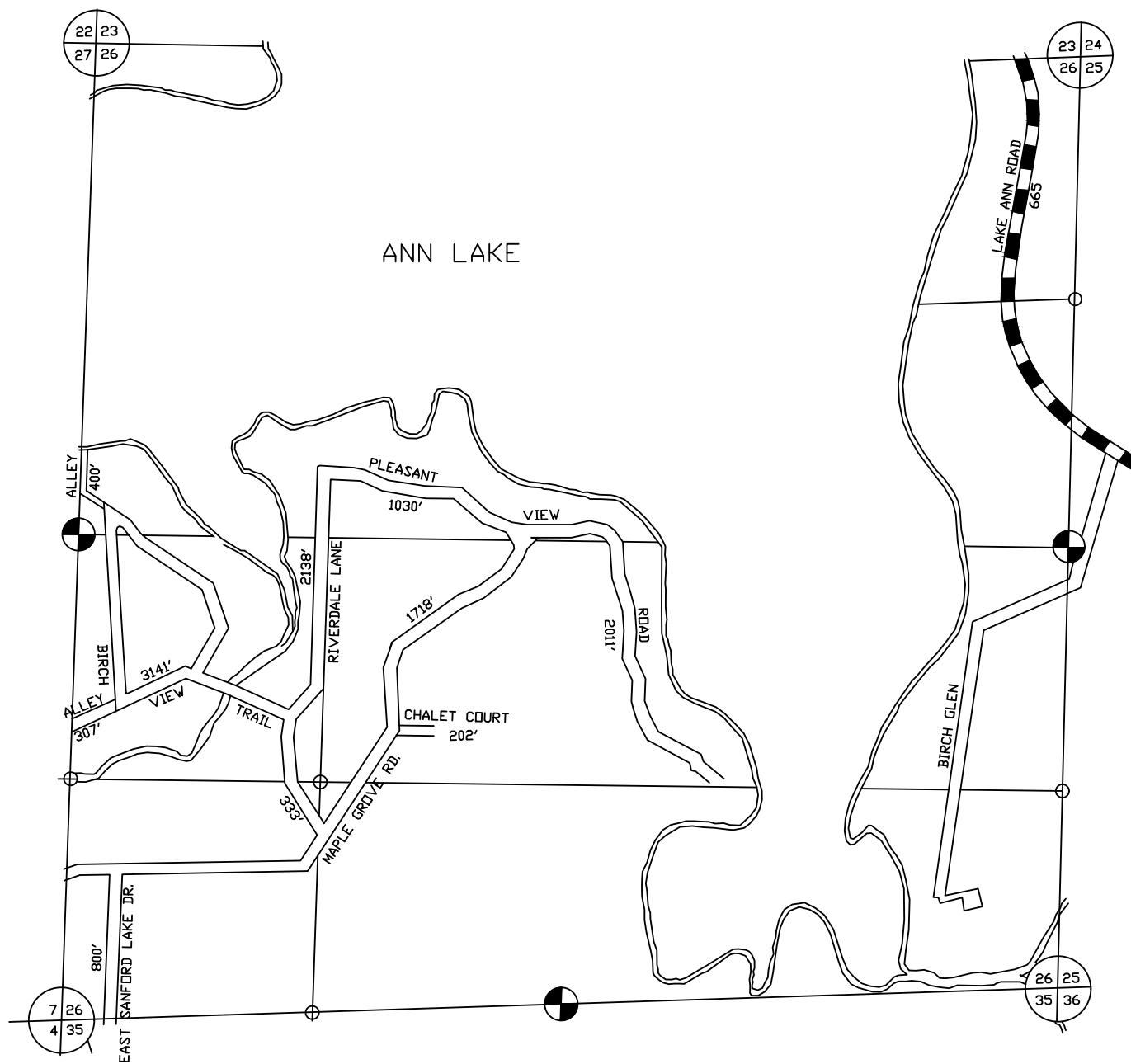
TOTAL FEET 16,195' EQUALS 3.07 MILES

I HEREBY CERTIFY THAT THE ROADS SHOWN  
HEREON BY SYMBOL OR IN GREEN AS LOCAL  
ROADS ARE IN USE AND ARE UNDER THE JURIS-  
DICTION OF THE COUNTY ROAD COMMISSION.

\_\_\_\_\_  
CHAIRMAN                      DATE



TOWNSHIP ALMIRA  
SECTION 24 T27N, R13W  
COUNTY BENZIE  
  
PREPARED BY  
BENZIE COUNTY ROAD COMMISSION



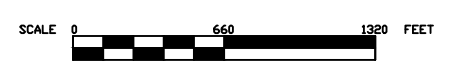
LEGEND

- COUNTY LINE -----
- CORPORATE LIMITS - - - - -
- STATE TRUNK LINE ██████████
- COUNTY PRIMARY ██████
- COUNTY LOCAL =====
- ADJACENT COUNTY # # # # #
- CITY OR VILLAGE \_\_\_\_\_

TOTAL FEET 12,080' EQUALS 2.29 MILES

I HEREBY CERTIFY THAT THE ROADS SHOWN HEREON BY SYMBOL OR IN GREEN AS LOCAL ROADS ARE IN USE AND ARE UNDER THE JURISDICTION OF THE COUNTY ROAD COMMISSION.

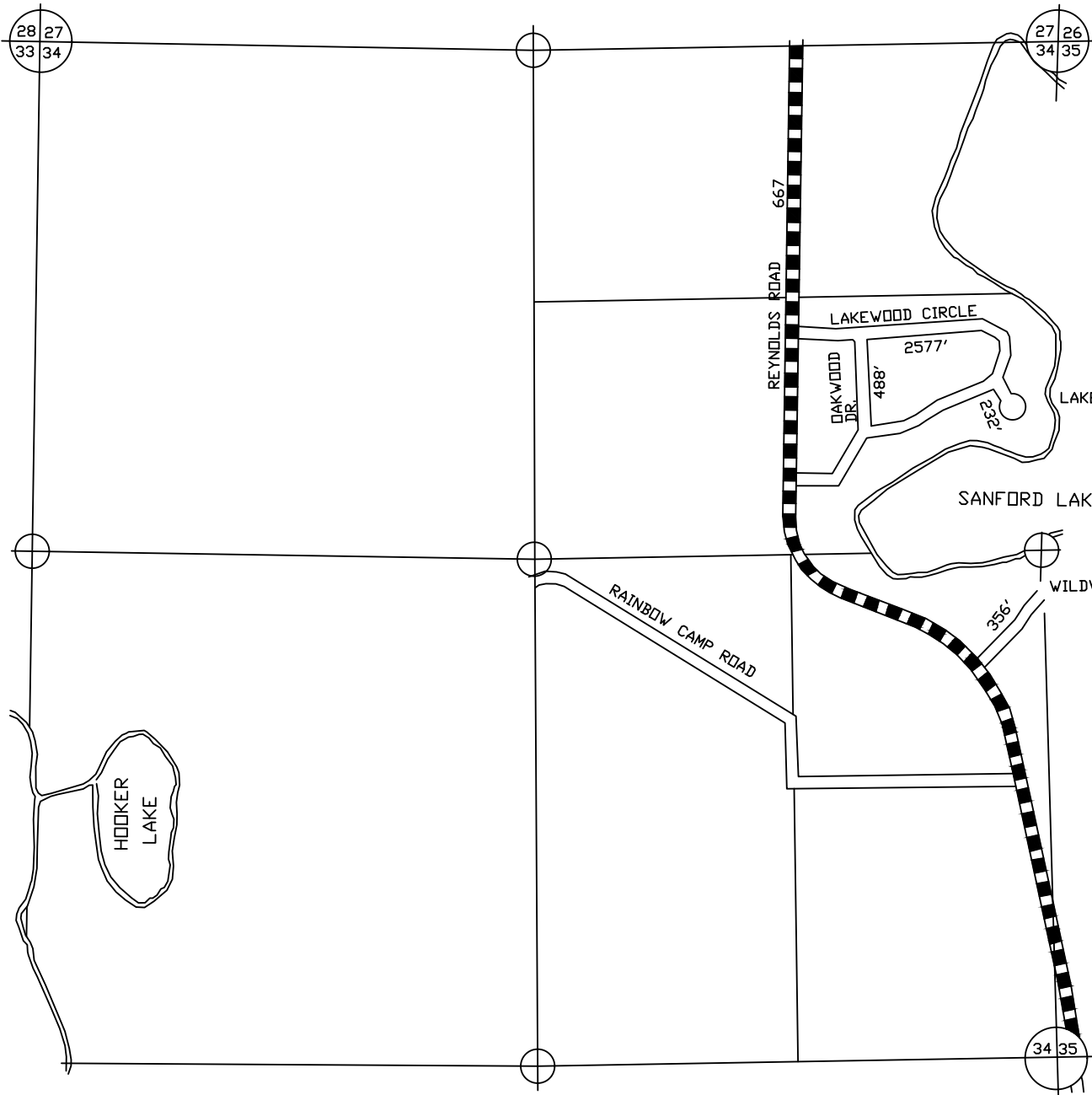
\_\_\_\_\_  
CHAIRMAN                      DATE



TOWNSHIP ALMIRA  
SECTION 26 T27N, R13W  
COUNTY BENZIE

PREPARED BY  
BENZIE COUNTY ROAD COMMISSION



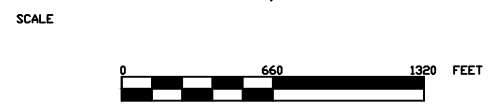


- LEGEND
- COUNTY LINE
  - CORPORATE LIMITS
  - STATE TRUNK LINE
  - COUNTY PRIMARY
  - COUNTY LOCAL
  - ADJACENT COUNTY
  - CITY OR VILLAGE

TOTAL FEET 3,653' EQUALS 0.69 MILES

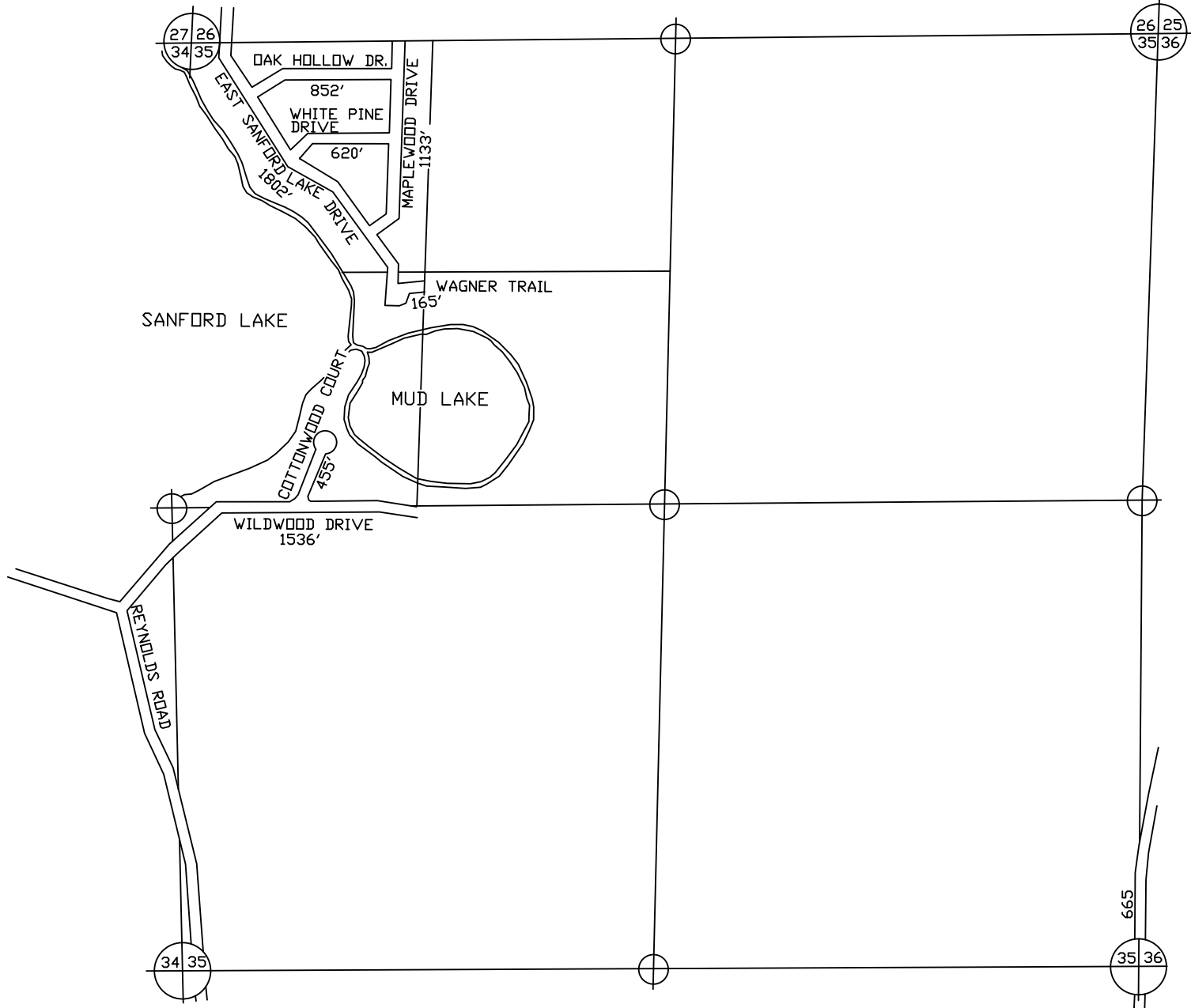
I HEREBY CERTIFY THAT THE ROADS SHOWN  
HEREON BY SYMBOL OR IN GREEN AS LOCAL  
ROADS ARE IN USE AND ARE UNDER THE JURIS-  
DICTION OF THE COUNTY ROAD COMMISSION.

\_\_\_\_\_  
CHAIRMAN                      DATE



TOWNSHIP ALMIRA  
SECTION 34 T27N, R13W  
COUNTY BENZIE

PREPARED BY  
BENZIE COUNTY ROAD COMMISSION



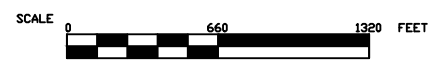
LEGEND

- COUNTY LINE
- COORDINATE LIMITS
- STATE TRUNK LINE
- COUNTY PRIMARY
- COUNTY LOCAL
- ADJACENT COUNTY
- CITY OR VILLAGE

TOTAL FEET 6,563' EQUALS 1.24 MILES

I HEREBY CERTIFY THAT THE ROADS SHOWN  
HEREON BY SYMBOL OR IN GREEN AS LOCAL  
ROADS ARE IN USE AND ARE UNDER THE JURIS-  
DICTION OF THE COUNTY ROAD COMMISSION.

\_\_\_\_\_  
CHAIRMAN                      DATE



TOWNSHIP ALMIRA  
SECTION 35 T27N, R13W  
COUNTY BENZIE

PREPARED BY  
BENZIE COUNTY ROAD COMMISSION